

GLIPR1L1 Polyclonal Antibody

Catalog Number:E-AB-52347



Note: Centrifuge before opening to ensure complete recovery of vial contents.

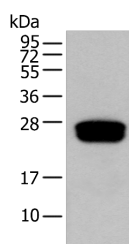
Description

Reactivity	Human
Immunogen	Fusion protein of human GLIPR1L1
Host	Rabbit
Isotype	IgG
Purification	Antigen affinity purification
Conjugation	Unconjugated
Formulation	PBS with 0.05% NaN ₃ and 40% Glycerol,pH7.4

Applications Recommended Dilution

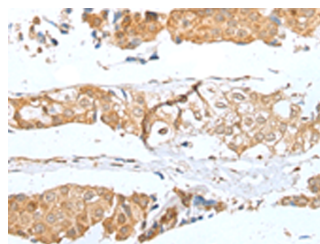
WB	1:500-1:2000
IHC	1:25-1:100
ELISA	1:5000-1:10000

Data



Western blot analysis of Human testis tissue using GLIPR1L1 Polyclonal Antibody at dilution of 1:300

Observed Mw:Refer to figures
Calculated Mw:27 kDa



Immunohistochemistry of paraffin-embedded Human breast cancer tissue using GLIPR1L1 Polyclonal Antibody at dilution of 1:25(×200)

Preparation & Storage

Storage Store at -20°C. Avoid freeze / thaw cycles.

Background

The GLIPR1 (glioma pathogenesis-related 1) family consists of three core members, designated GLIPR1, GLIPR1L1 (GLIPR1-like protein 1) and GLIPR1L2, which form a distinct subgroup within the cysteine-rich secretory protein (CRISP), antigen 5 and pathogenesis-related 1 (CAP) superfamily. Each member of the CAP superfamily has a conserved N-terminal CAP domain and a distinct C-terminal extension. CAP superfamily proteins are hypothesized to have roles in immunity, cell adhesion, carcinogenesis and male fertility. GLIPR1L1 is a 242 amino acid secreted protein. Highly expressed in testis, GLIPR1L1 exists as two isoforms produced by alternative splicing events. GLIPR1L1 is encoded by a gene that maps to human chromosome 12q21.1 and mouse chromosome 10 D2. The function of this protein remains unknown.

For Research Use Only

A Reliable Research Partner in Life Science and Medicine

Toll-free: 1-888-852-8623

Web: www.elabscience.com

Tel: 1-832-243-6086

Email: techsupport@elabscience.com

Fax: 1-832-243-6017