

# UFL1 Polyclonal Antibody

Catalog Number: E-AB-92278



**Note:** Centrifuge before opening to ensure complete recovery of vial contents.

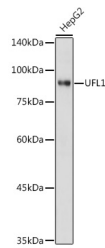
## Description

<b>Reactivity</b>	Human, Mouse, Rat
<b>Immunogen</b>	Recombinant fusion protein of human UFL1
<b>Host</b>	Rabbit
<b>Isotype</b>	IgG
<b>Purification</b>	Affinity purification
<b>Conjugation</b>	Unconjugated
<b>Formulation</b>	PBS with 0.05% proclin300, 50% glycerol, pH7.3.

## Applications Recommended Dilution

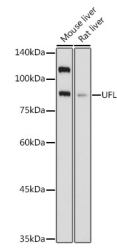
<b>WB</b>	1:500-1:2000
<b>IF</b>	1:50-1:200

## Data

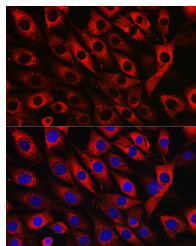


Western blot analysis of extracts of HepG2 cells using UFL1 Polyclonal Antibody at 1:1000 dilution.

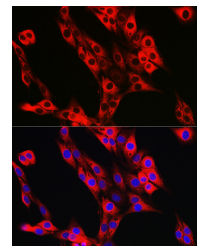
**Observed Mw: 90 kDa**  
**Calculated Mw: 89 kDa**



Western blot analysis of extracts of various cell lines using UFL1 Polyclonal Antibody at 1:1000 dilution.



Immunofluorescence analysis of NIH/3T3 cells using UFL1 Polyclonal Antibody at dilution of 1:50 (40x lens). Blue: DAPI for nuclear staining.



Immunofluorescence analysis of PC-12 cells using UFL1 Polyclonal Antibody at dilution of 1:50 (40x lens). Blue: DAPI for nuclear staining.

## Preparation & Storage

**Storage** Store at -20°C. Avoid freeze/thaw cycles.

## Background

E3 protein ligase that mediates ufmylation, the covalent attachment of the ubiquitin-like modifier UFM1 to lysine residues on target proteins, and which plays a key role in reticulophagy (also called ER-phagy induced in response to endoplasmic reticulum stress. In response to endoplasmic reticulum stress, recruited to the endoplasmic reticulum

## For Research Use Only

A Reliable Research Partner in Life Science and Medicine

Toll-free: 1-888-852-8623

Web: [www.elabscience.com](http://www.elabscience.com)

Tel: 1-832-243-6086

Email: [techsupport@elabscience.com](mailto:techsupport@elabscience.com)

Fax: 1-832-243-6017

# UFL1 Polyclonal Antibody

Catalog Number: E-AB-92278



membrane by DDRGK1, and mediates ufmylation of proteins such as RPN1 and RPL26/uL24, thereby promoting reticulophagy of endoplasmic reticulum sheets. Ufmylation-dependent reticulophagy inhibits the unfolded protein response (UPR via ERN1/IRE1-alpha. Ufmylation in response to endoplasmic reticulum stress is essential for processes such as hematopoiesis, blood vessel morphogenesis or inflammatory response. Regulates inflammation in response to endoplasmic reticulum stress by promoting reticulophagy, leading to inhibit the activity of the NF-kappa-B transcription factor (By similarity).

---

## For Research Use Only

A Reliable Research Partner in Life Science and Medicine

Toll-free: 1-888-852-8623

Tel: 1-832-243-6086

Fax: 1-832-243-6017

Web: [www.elabscience.com](http://www.elabscience.com)

Email: [techsupport@elabscience.com](mailto:techsupport@elabscience.com)