

PBOV1 Polyclonal Antibody

Catalog Number: E-AB-17415



Note: Centrifuge before opening to ensure complete recovery of vial contents.

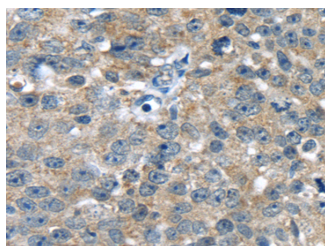
Description

Reactivity	Human
Immunogen	Synthetic peptide of human PBOV1
Host	Rabbit
Isotype	IgG
Purification	Affinity purification
Conjugation	Unconjugated
Formulation	PBS with 0.05% sodium azide and 50% glycerol, PH7.4

Applications Recommended Dilution

WB	1:500-2000
IHC	1:10-50
ELISA	1:2000-5000

Data



Immunohistochemistry of paraffin-embedded Human breast cancer using PBOV1 Polyclonal Antibody at dilution of 1/20
Calculated Mw:16 kDa



Western Blot analysis of Mouse spleen tissue using PBOV1 Polyclonal Antibody at dilution of 1/200

Preparation & Storage

Storage Store at -20°C. Avoid freeze / thaw cycles.

Background

This intronless gene encodes a protein of unknown function. Its expression is up-regulated in some types of cancer, including prostate, breast, and bladder cancer.

For Research Use Only

A Reliable Research Partner in Life Science and Medicine

Toll-free: 1-888-852-8623

Web: www.elabscience.com

Tel: 1-832-243-6086

Email: techsupport@elabscience.com

Fax: 1-832-243-6017