

# Phosphoserine Monoclonal Antibody

catalog number: E-AB-21334

**Note:** Centrifuge before opening to ensure complete recovery of vial contents.

## Description

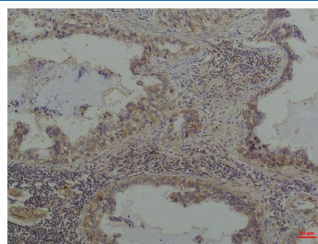
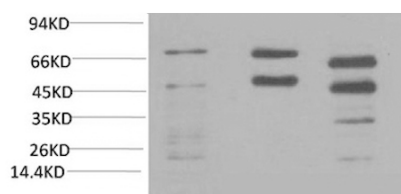
<b>Reactivity</b>	All
<b>Immunogen</b>	Purified Protein
<b>Host</b>	Mouse
<b>Isotype</b>	IgG
<b>Clone</b>	7A3
<b>Purification</b>	Protein A purification
<b>Conjugation</b>	Unconjugated
<b>buffer</b>	Phosphate buffered solution, pH 7.4, containing 0.05% stabilizer, 0.5% protein protectant and 50% glycerol.

## Applications

## Recommended Dilution

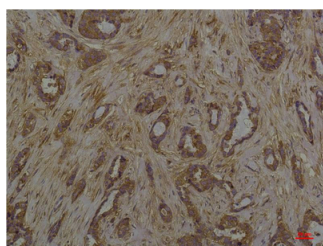
<b>WB</b>	1:500-1:2000
<b>IHC</b>	1:100-1:300

## Data



Western Blot analysis of 1) HeLa, 2) Rat brain, 3) Mouse brain with Phosphoserine Monoclonal Antibody at dilution of 1:2000

Immunohistochemistry of paraffin-embedded Human lung carcinoma tissue with Phosphoserine Monoclonal Antibody at dilution of 1:200



Immunohistochemistry of paraffin-embedded Human breast carcinoma tissue with Phosphoserine Monoclonal Antibody at dilution of 1:200

## Preparation & Storage

<b>Storage</b>	Store at -20°C Valid for 12 months. Avoid freeze / thaw cycles.
<b>Shipping</b>	The product is shipped with ice pack, upon receipt, store it immediately at the temperature recommended.

## For Research Use Only