

Recombinant BMP2 Monoclonal Antibody

catalog number: **AN300912L**

Note: Centrifuge before opening to ensure complete recovery of vial contents.

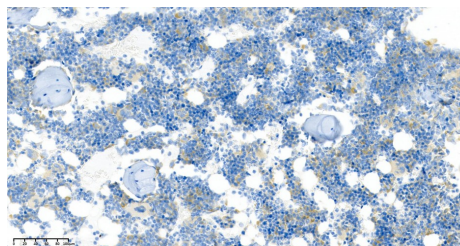
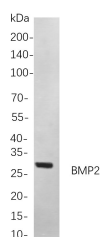
Description

Reactivity	Human;Mouse;Rat
Immunogen	Recombinant Human BMP2 protein
Host	Rabbit
Isotype	IgG, κ
Clone	9C1
Purification	Protein A
Buffer	PBS, 50% glycerol, 0.05% Proclin 300, 0.05% protein protectant.

Applications

Applications	Recommended Dilution
IHC	1:200-1:1000
WB	1:1000-1:5000

Data



Western Blot with Recombinant BMP2 Monoclonal Antibody at dilution of 1:1000 dilution. Lane A: Hela cells. Immunohistochemistry of paraffin-embedded rat spine using Recombinant BMP2 Monoclonal Antibody at dilution of 1:200.

Observed-MW:30 kDa,13 kDa
Calculated-MW:45 kDa,13 kDa

Preparation & Storage

Storage	Store at -20°C Valid for 12 months. Avoid freeze / thaw cycles.
Shipping	Ice bag

Background

This gene encodes a secreted ligand of the TGF-beta (transforming growth factor-beta) superfamily of proteins. Ligands of this family bind various TGF-beta receptors leading to recruitment and activation of SMAD family transcription factors that regulate gene expression. The encoded preproprotein is proteolytically processed to generate each subunit of the disulfide-linked homodimer, which plays a role in bone and cartilage development. Duplication of a regulatory region downstream of this gene causes a form of brachydactyly characterized by a malformed index finger and second toe in human patients.

For Research Use Only

Toll-free: 1-888-852-8623
Web: www.elabscience.com

Tel: 1-832-243-6086
Email: techsupport@elabscience.com

Fax: 1-832-243-6017

Rev. V1.0