

JDP2 Polyclonal Antibody

Catalog Number: E-AB-18141



Note: Centrifuge before opening to ensure complete recovery of vial contents.

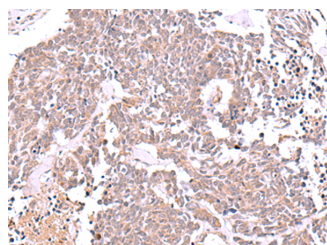
Description

Reactivity	Human, Mouse, Rat
Immunogen	Synthetic peptide of human JDP2
Host	Rabbit
Isotype	IgG
Purification	Antigen affinity purification
Conjugation	Unconjugated
Formulation	PBS with 0.05% NaN ₃ and 40% Glycerol, pH7.4

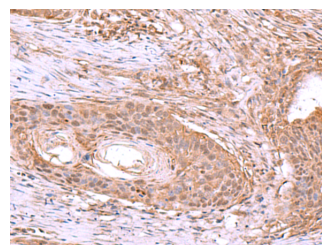
Applications Recommended Dilution

IHC	1:40-1:200
ELISA	1:5000-1:10000

Data



Immunohistochemistry of paraffin-embedded Human lung cancer tissue using JDP2 Polyclonal Antibody at dilution of 1:40(×200)



Immunohistochemistry of paraffin-embedded Human esophagus cancer tissue using JDP2 Polyclonal Antibody at dilution of 1:40(×200)

Preparation & Storage

Storage Store at -20°C. Avoid freeze / thaw cycles.

Background

JDP2 (Jun Dimerization Protein 2) is a Protein Coding gene. Diseases associated with JDP2 include Keratitis and Skeletal Muscle Cancer. Among its related pathways are Tacrolimus/Cyclosporine Pathway, Pharmacodynamics and ATF-2 transcription factor network. GO annotations related to this gene include transcription factor activity, sequence-specific DNA binding and protein heterodimerization activity. An important paralog of this gene is ATF3.

For Research Use Only

A Reliable Research Partner in Life Science and Medicine

Toll-free: 1-888-852-8623

Web: www.elabscience.com

Tel: 1-832-243-6086

Email: techsupport@elabscience.com

Fax: 1-832-243-6017