

**Note:** Centrifuge before opening to ensure complete recovery of vial contents.

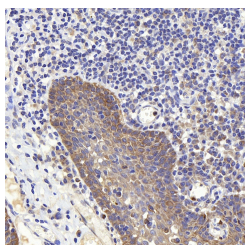
## Description

<b>Reactivity</b>	Human
<b>Immunogen</b>	KLH conjugated Synthetic peptide corresponding to Human PERK
<b>Host</b>	Rabbit
<b>Isotype</b>	IgG
<b>Purification</b>	Affinity purification
<b>Conjugation</b>	Unconjugated
<b>Formulation</b>	PBS with 0.02% sodium azide, 1% protective protein and 50% glycerol, pH7.4

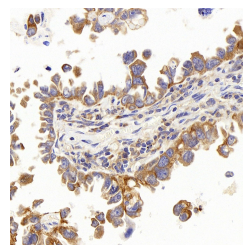
## Applications Recommended Dilution

<b>IHC</b>	1:400-1000
------------	------------

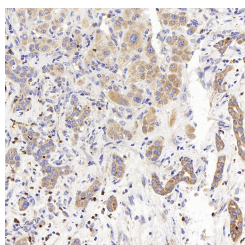
## Data



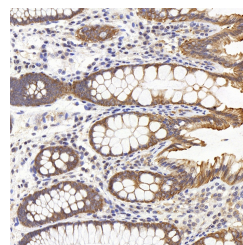
Immunohistochemistry analysis of paraffin-embedded human tonsil using PERK Polyclonal Antibody at dilution of 1:400.



Immunohistochemistry analysis of paraffin-embedded human lung cancer using PERK Polyclonal Antibody at dilution of 1:400.



Immunohistochemistry analysis of paraffin-embedded human liver cancer using PERK Polyclonal Antibody at dilution of 1:400.



Immunohistochemistry analysis of paraffin-embedded human colon using PERK Polyclonal Antibody at dilution of 1:500.

## Preparation & Storage

**Storage** Store at -20°C. Avoid freeze / thaw cycles.

## Background

The protein encoded by this gene phosphorylates the alpha subunit of eukaryotic translation-initiation factor 2 (EIF2), leading to its inactivation, and thus to a rapid reduction of translational initiation and repression of global protein synthesis. It is a type I membrane protein located in the endoplasmic reticulum (ER), where it is induced by ER stress caused by malformed proteins. Mutations in this gene are associated with Wolcott-Rallison syndrome.

## For Research Use Only

A Reliable Research Partner in Life Science and Medicine

Toll-free: 1-888-852-8623

Web: [www.elabscience.com](http://www.elabscience.com)

Tel: 1-832-243-6086

Email: [techsupport@elabscience.com](mailto:techsupport@elabscience.com)

Fax: 1-832-243-6017