

SNRPB2 Polyclonal Antibody

Catalog Number: E-AB-18948



Note: Centrifuge before opening to ensure complete recovery of vial contents.

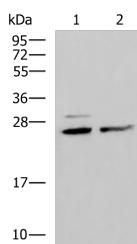
Description

Reactivity	Human, Mouse
Immunogen	Fusion protein of human SNRPB2
Host	Rabbit
Isotype	IgG
Purification	Antigen affinity purification
Conjugation	Unconjugated
Formulation	PBS with 0.05% NaN ₃ and 40% Glycerol, pH7.4

Applications Recommended Dilution

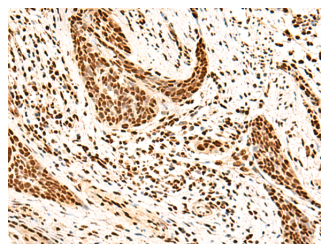
WB	1:1000-1:5000
IHC	1:50-1:300
ELISA	1:5000-1:10000

Data

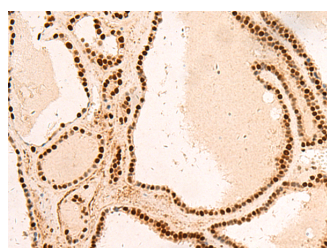


Western blot analysis of HeLa and K562 cell lysates using SNRPB2 Polyclonal Antibody at dilution of 1:1600

Observed MW: Refer to figures
Calculated Mw: 25 kDa



Immunohistochemistry of paraffin-embedded Human esophagus cancer tissue using SNRPB2 Polyclonal Antibody at dilution of 1:75 (×200)



Immunohistochemistry of paraffin-embedded Human thyroid cancer tissue using SNRPB2 Polyclonal Antibody at dilution of 1:75 (×200)

Preparation & Storage

Storage Store at -20°C. Avoid freeze / thaw cycles.

Background

For Research Use Only

A Reliable Research Partner in Life Science and Medicine

Toll-free: 1-888-852-8623

Web: www.elabscience.com

Tel: 1-832-243-6086

Email: techsupport@elabscience.com

Fax: 1-832-243-6017

SNRPB2 Polyclonal Antibody

Catalog Number: E-AB-18948



The protein encoded by this gene associates with stem loop IV of U2 small nuclear ribonucleoprotein (U2 snRNP) in the presence of snRNP-A'. The encoded protein may play a role in pre-mRNA splicing. Autoantibodies from patients with systemic lupus erythematosus frequently recognize epitopes on the encoded protein. Two transcript variants encoding the same protein have been found for this gene.

For Research Use Only

A Reliable Research Partner in Life Science and Medicine

Toll-free: 1-888-852-8623

Tel: 1-832-243-6086

Fax: 1-832-243-6017

Web: www.elabscience.com

Email: techsupport@elabscience.com