

Recombinant N-Cadherin/CD325/CDH2 Monoclonal Antibody

catalog number: **AN300288P**

Note: *Centrifuge before opening to ensure complete recovery of vial contents.*

Description

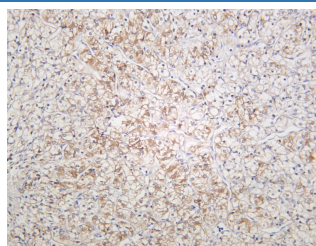
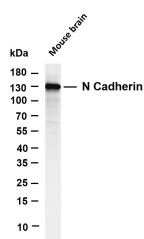
Reactivity	Human;Mouse;Rat
Immunogen	Recombinant Human N-Cadherin / CD325 / CDH2 Protein
Host	Rabbit
Isotype	IgG
Clone	B210
Purification	Protein A
Buffer	0.2 µm filtered solution in PBS

Applications

Recommended Dilution

IHC	1:500-1:2000
WB	1:1000-1:5000
IF	1:200-1:1000
ELISA	1:5000-1:20000

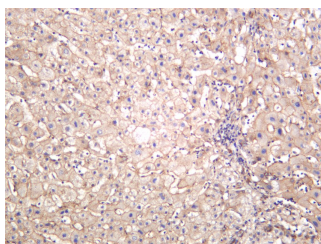
Data



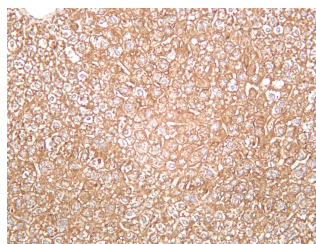
Various whole cell lysates were separated by 4-20% SDS-PAGE, and the membrane was blotted with anti-N Cadherin antibody. The HRP-conjugated Goat anti-Rabbit IgG (H + L) antibody was used to detect the antibody.

Lane 1: Mouse brain Predicted band size: 125kDa

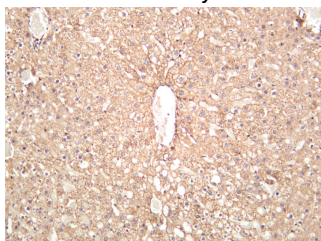
Observed band size: 130kDa



Human liver was stained with anti-N Cadherin rabbit antibody



Mouse liver was stained with anti-N Cadherin rabbit antibody



For Research Use Only

Rat liver was stained with anti-N Cadherin rabbit antibody

Preparation & Storage

Storage Store at -20°C Valid for 12 months. Avoid freeze / thaw cycles.
Shipping Ice bag

Background

This gene encodes a classical cadherin and member of the cadherin superfamily. Alternative splicing results in multiple transcript variants, at least one of which encodes a preproprotein is proteolytically processed to generate a calcium-dependent cell adhesion molecule and glycoprotein. This protein plays a role in the establishment of left-right asymmetry, development of the nervous system and the formation of cartilage and bone. [provided by RefSeq, Nov 2015]

For Research Use Only

Toll-free: 1-888-852-8623
Web: www.elabscience.com

Tel: 1-832-243-6086
Email: techsupport@elabscience.com

Fax: 1-832-243-6017

Rev. V1.4