

## Recombinant S100A8 Monoclonal Antibody

catalog number: **AN301719L**

**Note:** Centrifuge before opening to ensure complete recovery of vial contents.

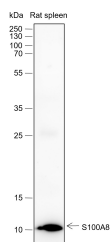
### Description

<b>Reactivity</b>	Human;Rat;Mouse
<b>Immunogen</b>	Recombinant human S100A8 fragment
<b>Host</b>	Rabbit
<b>Isotype</b>	IgG, $\kappa$
<b>Clone</b>	A427
<b>Purification</b>	Protein A purified
<b>Buffer</b>	PBS, 50% glycerol, 0.05% Proclin 300, 0.05% protein protectant.

### Applications Recommended Dilution

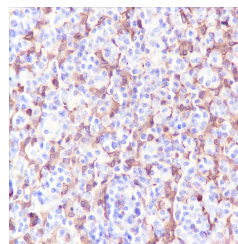
<b>WB</b>	1:500-1:1000
<b>IHC</b>	1:200-1:1000
<b>FCM</b>	1:50-1:100

### Data

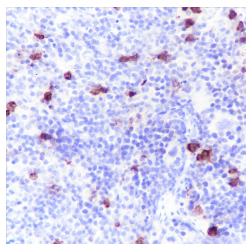


Western Blot with S100A8 Monoclonal Antibody at dilution of 1: 1000. Lane 1: Rat spleen

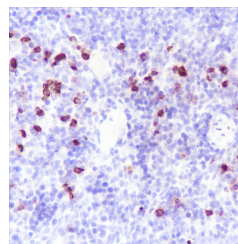
**Observed-MW:11 kDa**  
**Calculated-MW:11 kDa**



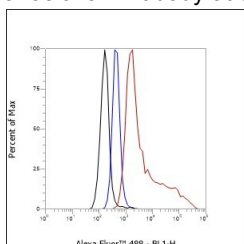
Immunohistochemistry of paraffin-embedded Human tonsil using S100A8 Monoclonal Antibody at dilution of 1: 1000.



Immunohistochemistry of paraffin-embedded Mouse spleen using S100A8 Monoclonal Antibody at dilution of 1:1000.



Immunohistochemistry of paraffin-embedded Rat spleen using S100A8 Monoclonal Antibody at dilution of 1:1000.



### For Research Use Only

Toll-free: 1-888-852-8623  
Web: [www.elabscience.com](http://www.elabscience.com)

Tel: 1-832-243-6086  
Email: [techsupport@elabscience.com](mailto:techsupport@elabscience.com)

Fax: 1-832-243-6017

Rev. V1.0

Flow cytometric analysis of human S100A8 expression on THP-1 cells. Cells were stained with purified anti-Human S100A8, then a Alexa Fluor 488-conjugated second step antibody. The histogram were derived from events with the forward and side light-scatter characteristics of intact cells.

## Preparation & Storage

<b>Storage</b>	Store at -20°C Valid for 12 months. Avoid freeze / thaw cycles.
<b>Shipping</b>	Ice bag

## Background

MRP8/S100A8 is a calcium- and zinc-binding protein which plays a prominent role in the regulation of inflammatory processes and immune response. It can induce neutrophil chemotaxis and adhesion. MRP8 has a wide plethora of intra- and extracellular functions. The intracellular functions include: facilitating leukocyte arachidonic acid trafficking and metabolism, modulation of the tubulin-dependent cytoskeleton during migration of phagocytes and activation of the neutrophilic. The extracellular functions involve proinflammatory, antimicrobial, oxidant-scavenging and apoptosis-inducing activities. Its proinflammatory activity includes recruitment of leukocytes, promotion of cytokine and chemokine production, and regulation of leukocyte adhesion and migration.

## For Research Use Only