

Recombinant MESDC2 Monoclonal Antibody

catalog number: **AN300356P**

Note: Centrifuge before opening to ensure complete recovery of vial contents.

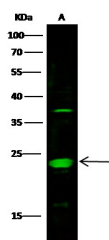
Description

Reactivity	Human
Immunogen	Recombinant Human MESDC2 protein
Host	Rabbit
Isotype	IgG
Clone	11D16
Purification	Protein A
Buffer	0.2 µm filtered solution in PBS

Applications Recommended Dilution

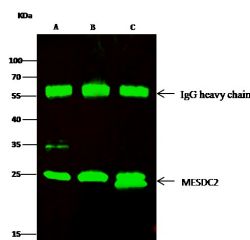
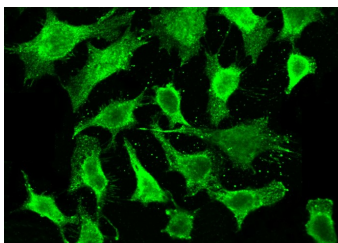
WB	1:500-1:2000
ICC/IF	1:20-1:100
IP	1-4 µL/mg of lysate

Data



Western Blot with MESDC2 Monoclonal Antibody at dilution of 1:500 dilution. Lane A: HEK293 Whole Cell Lysate, Lysates/proteins at 30 µg per lane.

Observed-MW:26 kDa
Calculated-MW:26 kDa



Immunoprecipitation analysis using 2 µL anti-MESDC2 Monoclonal Antibody and 15 µl of 50 % Protein G agarose. Western blot was performed from the immunoprecipitate using MESDC2 Monoclonal Antibody at a dilution of 1:500.

Lane A:0.5 mg 293T Whole Cell Lysate, Lane B:0.5 mg Hela Whole Cell Lysate, Lane C:0.5 mg NIH-3T3 Whole Cell Lysate

Observed-MW:26 kDa
Calculated-MW:26 kDa

For Research Use Only

Toll-free: 1-888-852-8623
Web: www.elabscience.com

Tel: 1-832-243-6086
Email: techsupport@elabscience.com

Fax: 1-832-243-6017

Rev. V1.0

Immunofluorescence analysis of Mesdc2 in Hela cells. Cells were fixed with 4% PFA, permeabilized with 0.1% Triton X-100 in PBS, blocked with 10% serum, and incubated with rabbit anti-human Mesdc2 monoclonal antibody (dilution ratio 1:60) at 4°C overnight. Then cells were stained with the Alexa Fluor®488-conjugated Goat Anti-rabbit IgG secondary antibody (green). Positive staining was localized to Cytoplasm.

Preparation & Storage

Storage	This antibody can be stored at 2°C-8°C for one month without detectable loss of activity. Antibody products are stable for twelve months from date of receipt when stored at -20°C to -80°C. Preservative-Free. Avoid repeated freeze-thaw cycles.
Shipping	Ice bag

Background

Chaperone specifically assisting the folding of beta-propeller/EGF modules within the family of low-density lipoprotein receptors (LDLRs). Acts as a modulator of the Wnt pathway through chaperoning the coreceptors of the canonical Wnt pathway, LRP5 and LRP6, to the plasma membrane. Essential for specification of embryonic polarity and mesoderm induction. Plays an essential role in neuromuscular junction (NMJ) formation by promoting cell-surface expression of LRP4 (By similarity). May regulate phagocytosis of apoptotic retinal pigment epithelium (RPE cells (By similarity).

For Research Use Only