

# Recombinant Human CDO/CDON Protein (His Tag)

Catalog Number: PKSH033720



**Note:** Centrifuge before opening to ensure complete recovery of vial contents.

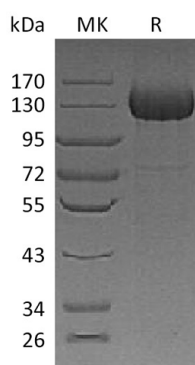
## Description

<b>Species</b>	Human
<b>Mol_Mass</b>	100.4 kDa
<b>Accession</b>	Q4KMG0
<b>Bio-activity</b>	Not validated for activity

## Properties

<b>Purity</b>	> 85 % as determined by reducing SDS-PAGE.
<b>Endotoxin</b>	< 1.0 EU per µg of the protein as determined by the LAL method.
<b>Storage</b>	Generally, lyophilized proteins are stable for up to 12 months when stored at -20 to -80 °C. Reconstituted protein solution can be stored at 4-8°C for 2-7 days. Aliquots of reconstituted samples are stable at < -20°C for 3 months.
<b>Shipping</b>	This product is provided as lyophilized powder which is shipped with ice packs.
<b>Formulation</b>	Lyophilized from a 0.2 µm filtered solution of PBS, pH 7.4. Normally 5% - 8% trehalose, mannitol and 0.01% Tween 80 are added as protectants before lyophilization. Please refer to the specific buffer information in the printed manual.
<b>Reconstitution</b>	Please refer to the printed manual for detailed information.

## Data



> 85 % as determined by reducing SDS-PAGE.

## Background

CDO (CAMrelated/down-regulatedby oncogenes) is a member of the Immunoglobulin (Ig) superfamily, Ig/Fibronectin (FN)type III repeat family of cell surface proteins. Human CDO is a type I transmembrane (TM) glycoprotein. It is synthesized as a 1287 amino acid (aa) precursor that contains a 25 aa signal sequence, a 938 aa extracellular domain (ECD), a 21 aa TM segment and a 303 aa cytoplasmic region. The ECD contains five C2-type Ig-like domains, followed by three FN type III repeats. The ECD of human CDO is 85% aa identical to mouse CDO ECD. CDO is found on muscle precursor and neural progenitor cells of the embryo. It likely promotes muscle differentiation, and contributes to axon guidance and neuronal patterning.

## For Research Use Only

A Reliable Research Partner in Life Science and Medicine  
Tel: 400-999-2100

Email: [techsupport@elabscience.cn](mailto:techsupport@elabscience.cn)

Web: [www.elabscience.cn](http://www.elabscience.cn)

Rev. V3.2