

SLC16A1 Polyclonal Antibody

Catalog Number:E-AB-53264



Note: Centrifuge before opening to ensure complete recovery of vial contents.

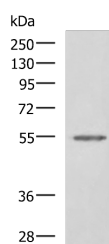
Description

Reactivity	Human
Immunogen	Synthetic peptide of human SLC16A1
Host	Rabbit
Isotype	IgG
Purification	Antigen affinity purification
Conjugation	Unconjugated
Formulation	PBS with 0.05% NaN ₃ and 40% Glycerol,pH7.4

Applications Recommended Dilution

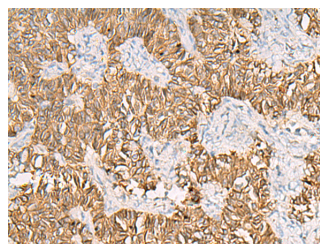
WB	1:500-1:2000
IHC	1:50-1:100
ELISA	1:5000-1:10000

Data

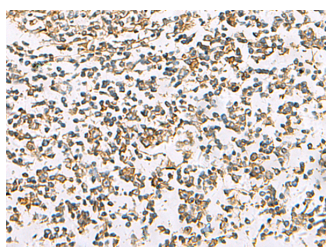


Western blot analysis of Jurkat cell lysate using SLC16A1 Polyclonal Antibody at dilution of 1:550

Observed Mw:Refer to figures
Calculated Mw:54 kDa



Immunohistochemistry of paraffin-embedded Human ovarian cancer tissue using SLC16A1 Polyclonal Antibody at dilution of 1:30(×200)



Immunohistochemistry of paraffin-embedded Human tonsil tissue using SLC16A1 Polyclonal Antibody at dilution of 1:30(×200)

Preparation & Storage

Storage Store at -20°C. Avoid freeze / thaw cycles.

Background

The protein encoded by this gene is a proton-linked monocarboxylate transporter that catalyzes the movement of many

For Research Use Only

A Reliable Research Partner in Life Science and Medicine

Toll-free: 1-888-852-8623

Web: www.elabscience.com

Tel: 1-832-243-6086

Email: techsupport@elabscience.com

Fax: 1-832-243-6017

SLC16A1 Polyclonal Antibody

Catalog Number: E-AB-53264



monocarboxylates, such as lactate and pyruvate, across the plasma membrane. Mutations in this gene are associated with erythrocyte lactate transporter defect. Alternatively spliced transcript variants have been found for this gene.

For Research Use Only

A Reliable Research Partner in Life Science and Medicine

Toll-free: 1-888-852-8623

Tel: 1-832-243-6086

Fax: 1-832-243-6017

Web: www.elabscience.com

Email: techsupport@elabscience.com