

GPR124 Polyclonal Antibody

Catalog Number: E-AB-16468



Note: Centrifuge before opening to ensure complete recovery of vial contents.

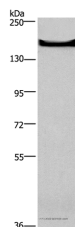
Description

Reactivity	Human, Mouse
Immunogen	Synthetic peptide of human GPR124
Host	Rabbit
Isotype	IgG
Purification	Affinity purification
Conjugation	Unconjugated
Formulation	PBS with 0.05% sodium azide and 50% glycerol, PH7.4

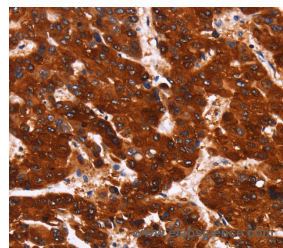
Applications Recommended Dilution

WB	1:500-1:2000
IHC	1:100-1:300

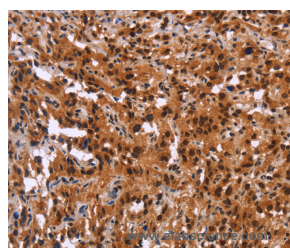
Data



Western Blot analysis of Mouse bladder tissue using GPR124 Polyclonal Antibody at dilution of 1:300
Calculated Mw: 143kDa



Immunohistochemistry of paraffin-embedded Human liver cancer using GPR124 Polyclonal Antibody at dilution of 1:40



Immunohistochemistry of paraffin-embedded Human thyroid cancer using GPR124 Polyclonal Antibody at dilution of 1:40

Preparation & Storage

Storage Store at -20°C. Avoid freeze / thaw cycles.

Background

TEM5 (G-protein coupled receptor 124) and TEM7 (plexin domain containing 1). TEMs are associated with the cell surface membrane at low levels in normal human and mouse tissues. TEM5 is a seven-pass transmembrane receptor, whereas TEM1, TEM7 and TEM8 span the membrane once. TEM5 expression is elevated during tumor angiogenesis and neoangiogenesis. TEM7 is highly expressed in tumor endothelium and neurons. Therefore, TEM5 and TEM7 may be

For Research Use Only

A Reliable Research Partner in Life Science and Medicine

Toll-free: 1-888-852-8623

Web: www.elabscience.com

Tel: 1-832-243-6086

Email: techsupport@elabscience.com

Fax: 1-832-243-6017

GPR124 Polyclonal Antibody

Catalog Number: E-AB-16468



suitable targets for the development of antiangiogenic therapies.

For Research Use Only

A Reliable Research Partner in Life Science and Medicine

Toll-free: 1-888-852-8623

Tel: 1-832-243-6086

Fax: 1-832-243-6017

Web: www.elabscience.com

Email: techsupport@elabscience.com