

CBX5 Monoclonal Antibody

catalog number: E-AB-22146

Note: Centrifuge before opening to ensure complete recovery of vial contents.

Description

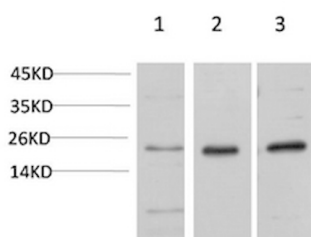
Reactivity	Human;Mouse;Rat
Immunogen	Recombinant Protein of HP-1 α
Host	Mouse
Isotype	IgG
Clone	7B6
Purification	Protein A purification
Conjugation	Unconjugated
buffer	Phosphate buffered solution, pH 7.4, containing 0.05% stabilizer, 0.5% protein protectant and 50% glycerol.

Applications

Recommended Dilution

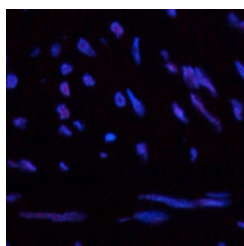
WB	1:500-2000
IHC	1:50-300

Data

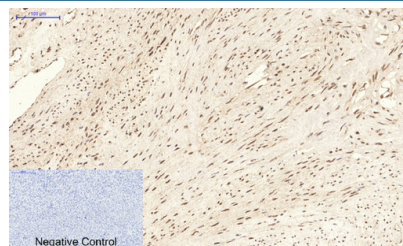


Western Blot analysis of 1) Hela, 2) 3T3, 3) PC-12 cells using CBX5 Monoclonal Antibody at dilution of 1:1000.

Observed-MV:22 kDa



Immunofluorescence analysis of Human uterus tissue using CBX5 Monoclonal Antibody at dilution of 1:200.



Immunohistochemistry of paraffin-embedded Human uterus tissue using CBX5 Monoclonal Antibody at dilution of 1:200.

Preparation & Storage

Storage	Store at -20°C Valid for 12 months. Avoid freeze / thaw cycles.
Shipping	The product is shipped with ice pack, upon receipt, store it immediately at the temperature recommended.

Background

For Research Use Only

CBX5 Monoclonal Antibody

catalog number: E-AB-22146



This gene encodes a highly conserved nonhistone protein, which is a member of the heterochromatin protein family. The protein is enriched in the heterochromatin and associated with centromeres. The protein has a single N-terminal chromodomain which can bind to histone proteins via methylated lysine residues, and a C-terminal chromo shadow-domain (CSD) which is responsible for the homodimerization and interaction with a number of chromatin-associated nonhistone proteins. The encoded product is involved in the formation of functional kinetochore through interaction with essential kinetochore proteins. The gene has a pseudogene located on chromosome 3. Multiple alternatively spliced variants, encoding the same protein, have been identified.

For Research Use Only

A Reliable Research Partner in Life Science and Medicine
Tel: 400-999-2100

Email: techsupport@elabscience.cn

Web: www.elabscience.cn

Rev. V1.7