

Recombinant Human Arylsulfatase A/ARSA Protein (His Tag)



Catalog Number:PKSH032093

Note: Centrifuge before opening to ensure complete recovery of vial contents.

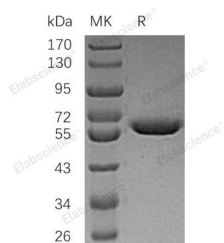
Description

Synonyms	Arylsulfatase A;ASA;Cerebroside-Sulfatase;ARSA
Species	Human
Expression Host	HEK293 Cells
Sequence	Arg19-Ala507
Accession	AAH14210.2
Calculated Molecular Weight	52.9 kDa
Observed molecular weight	50-65 kDa
Tag	C-His

Properties

Purity	> 95 % as determined by reducing SDS-PAGE.
Endotoxin	< 1.0 EU per µg of the protein as determined by the LAL method.
Storage	Store at < -20°C, stable for 6 months. Please minimize freeze-thaw cycles.
Shipping	This product is provided as liquid. It is shipped at frozen temperature with blue ice/gel packs. Upon receipt, store it immediately at < - 20°C.
Formulation	Supplied as a 0.2 µm filtered solution of 20mM Tris-HCl, 300mM NaCl, pH 8.0.
Reconstitution	Not Applicable

Data



> 95 % as determined by reducing SDS-PAGE.

Background

Arylsulfatase A (ARSA) is a lysosomal enzyme that breaks down Cerebroside 3-Sulfate, a major constituent of the myelin sheet, into Cerebroside and Sulfate. The ARSA deficiency results in Metachromatic Leukodystrophy (MLD), a lysosomal storage disease in the central and peripheral nervous systems with severe and progressive neurological symptoms. Recombinant Human ARSA corresponds to the ARSA mature peptide and has sulfatase activity.

For Research Use Only

A Reliable Research Partner in Life Science and Medicine

Toll-free: 1-888-852-8623

Web: www.elabscience.com

Tel: 1-832-243-6086

Email: techsupport@elabscience.com

Fax: 1-832-243-6017