

# VSIG8 Polyclonal Antibody

Catalog Number: E-AB-17258



**Note:** Centrifuge before opening to ensure complete recovery of vial contents.

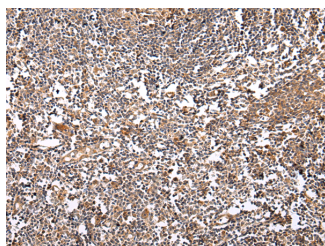
## Description

<b>Reactivity</b>	Human, Mouse
<b>Immunogen</b>	Fusion protein of human VSIG8
<b>Host</b>	Rabbit
<b>Isotype</b>	IgG
<b>Purification</b>	Affinity purification
<b>Conjugation</b>	Unconjugated
<b>Formulation</b>	PBS with 0.05% sodium azide and 50% glycerol, PH7.4

## Applications Recommended Dilution

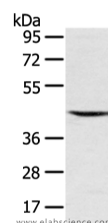
<b>WB</b>	1:200-1000
<b>IHC</b>	1:25-100
<b>ELISA</b>	1:1000-2000

## Data



Immunohistochemistry of paraffin-embedded Human tonsil using VSIG8 Polyclonal Antibody at dilution of 1/30

**Calculated Mw: 44 kDa**



Western Blot analysis of Mouse kidney tissue using VSIG8 Polyclonal Antibody at dilution of 1/400

## Preparation & Storage

**Storage** Store at -20°C. Avoid freeze / thaw cycles.

## Background

VSIG8 contains 2 Ig-like V-type (immunoglobulin-like) domains. VSIG8 is single-pass type I membrane protein. The function of the VSIG8 protein remains unknown.

## For Research Use Only

A Reliable Research Partner in Life Science and Medicine

Toll-free: 1-888-852-8623

Web: [www.elabscience.com](http://www.elabscience.com)

Tel: 1-832-243-6086

Email: [techsupport@elabscience.com](mailto:techsupport@elabscience.com)

Fax: 1-832-243-6017