

Elab Fluor® 647 Anti-Mouse CD107a/LAMP-1 Antibody[1D4B]

Catalog Number: E-AB-F1254M

Note: Centrifuge before opening to ensure complete recovery of vial contents.

Description

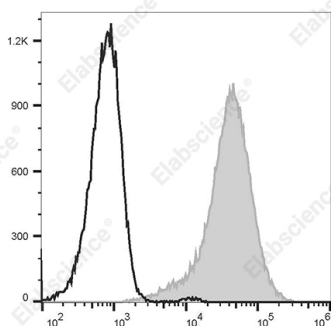
Reactivity	Mouse
Host	Rat
Isotype	Rat IgG2a, κ
Clone No.	1D4B
Isotype Control	Elab Fluor® 647 Rat IgG2a, κ Isotype Control[2A3] [Product E-AB-F09832M]
Conjugation	Elab Fluor® 647
Conjugation Information	Elab Fluor® 647 is designed to be excited by the Red laser (627-640 nm) and detected using an optical filter centered near 670 nm (e.g., a 660/20 nm bandpass filter).
Storage Buffer	Phosphate buffered solution, pH 7.2, containing 0.09% stabilizer.

Applications

Recommended usage

FCM	Each lot of this antibody is quality control tested by flow cytometric analysis. The amount of the reagent is suggested to be used 5 μL of antibody per test (million cells in 100 μL staining volume or per 100 μL of whole blood). Please check your vial before the experiment. Since applications vary, the appropriate dilutions must be determined for individual use.
------------	---

Data



C57BL/6 murine abdominal macrophages elicited by starch broth are intracellularly stained with are stained with Elab Fluor® 647 Anti-Mouse CD107a Antibody[1D4B] (filled gray histogram) or Elab Fluor® 647 Rat IgG2a,κ Isotype Control (empty black histogram).

Preparation & Storage

Storage	Keep as concentrated solution. This product can be stored at 2-8°C for 24 months. Please protected from prolonged exposure to light and do not freeze.
Shipping	Ice bag

Antigen Information

Alternate Names	CD107 antigen-like family member Alysosomal membrane glycoprotein 1;lysosome-associated membrane protein 1;LAMP-1;Lysosome-associated membrane glycoprotein 1;LAMP-1
------------------------	--

For Research Use Only

Uniprot ID

P11438

Gene ID

16783

Background

The 1D4B antibody recognizes CD107a which is also known as, Lysosome-Associated Membrane Protein 1 (LAMP-1). CD107a is one of the two major glycoproteins in lysosome membranes that provide useful markers to distinguish lysosomes from other organelles. CD107a may play a role in the lysosomal degradation of certain molecules. Mouse CD107a is a type I transmembrane glycoprotein. It consists of a 40-kDa core protein which is heavily glycosylated to form heterogeneous mature glycoprotein of 110-140 kDa. It is principally expressed in epithelial cells and macrophages in a variety of organs. Following activation, CD107a is relocated to the surface of some lymphocytes, macrophages, epithelial cells, endothelial cells, platelets, and tumor cells. Cell-surface CD107a may participate in intercellular adhesion and adhesion to the extracellular matrix. Cell surface CD107a expression can serve as a useful marker for cytotoxic NK and CD8+ T cells, as well as, some malignant tumor cells.