

## Recombinant Collagen I Monoclonal Antibody

catalog number: **AN301311L**

**Note:** Centrifuge before opening to ensure complete recovery of vial contents.

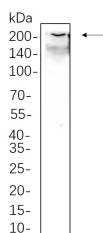
### Description

<b>Reactivity</b>	Human;Mouse;Rat
<b>Immunogen</b>	Recombinant Human Collagen I protein
<b>Host</b>	Rabbit
<b>Isotype</b>	IgG, $\kappa$
<b>Clone</b>	B1074
<b>Purification</b>	Protein A
<b>Buffer</b>	PBS, 50% glycerol, 0.05% Proclin 300, 0.05% protein protectant.

### Applications Recommended Dilution

<b>IHC</b>	1:200-1:1000
<b>WB</b>	1:2000-1:10000
<b>IF</b>	1:200-1:1000
<b>ELISA</b>	1:5000-1:20000

### Data



Western Blot with Recombinant Collagen I Monoclonal Antibody at dilution of 1:1000 dilution. Lane A: MRC-5 whole cell lysate.

**Observed-MW:220 kDa**

**Calculated-MW:139 kDa**

### Preparation & Storage

<b>Storage</b>	Store at -20°C Valid for 12 months. Avoid freeze / thaw cycles.
<b>Shipping</b>	Ice bag

### Background

Type I collagen is an important component of extracellular matrix, which is mainly distributed in cornea, skin, bone, tendon and other tissues. It is mainly used to study the distribution of connective tissue proteins, epithelial / mesothelial interaction and basement membrane.

### For Research Use Only

Toll-free: 1-888-852-8623  
Web: [www.elabscience.com](http://www.elabscience.com)

Tel: 1-832-243-6086  
Email: [techsupport@elabscience.com](mailto:techsupport@elabscience.com)

Fax: 1-832-243-6017

Rev. V1.2