

Recombinant Human LMCD1/Dyxin Protein (His Tag)

Catalog Number: PKSH032706



Note: Centrifuge before opening to ensure complete recovery of vial contents.

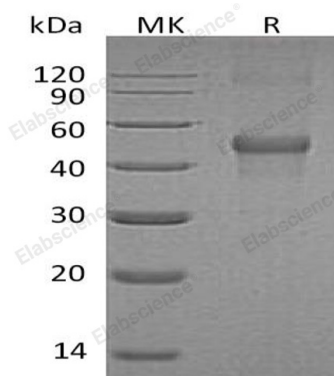
Description

Species	Human
Mol_Mass	44.0 kDa
Accession	Q9NZU5
Bio-activity	Not validated for activity

Properties

Purity	> 95 % as determined by reducing SDS-PAGE.
Endotoxin	< 1.0 EU per µg of the protein as determined by the LAL method.
Storage	Store at < -20°C, stable for 6 months. Please minimize freeze-thaw cycles.
Shipping	This product is provided as liquid. It is shipped at frozen temperature with blue ice/gel packs. Upon receipt, store it immediately at < -20°C.
Formulation	Supplied as a 0.2 µm filtered solution of 20mM Tris-HCl, 150mM NaCl, 1mM EDTA, pH 8.0.
Reconstitution	Not Applicable

Data



> 95 % as determined by reducing SDS-PAGE.

Background

LMCD1 is transcriptional cofactor which contains a cysteine-rich domain in the N-terminal region and 2 LIM domains in the C-terminal region. It also has several potential phosphorylation and N-myristoylation sites and a single potential N-glycosylation site. LMCD1 is expressed in many tissues with highest abundance in skeletal muscle. LMCD1 restricts GATA6 function by inhibiting DNA-binding, resulting in repression of GATA6 transcriptional activation of downstream target genes. It plays a critical role in the development of cardiac hypertrophy via activation of calcineurin/nuclear factor of activated T-cells signaling pathway.

For Research Use Only

A Reliable Research Partner in Life Science and Medicine
Tel:400-999-2100

Email:techsupport@elabscience.cn

Web:www.elabscience.cn

Rev. V3.2