

# BAK1 Polyclonal Antibody

Catalog Number: E-AB-10092 1 Publications



**Note:** Centrifuge before opening to ensure complete recovery of vial contents.

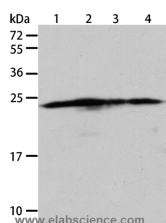
## Description

|                     |   |
|---------------------|---|
| <b>Reactivity</b>   | Human   |
| <b>Immunogen</b>    | Recombinant protein of human BAK1                   |
| <b>Host</b>         | Rabbit  |
| <b>Isotype</b>      | IgG   |
| <b>Purification</b> | Affinity purification                               |
| <b>Conjugation</b>  | Unconjugated  |
| <b>Formulation</b>  | PBS with 0.05% sodium azide and 50% glycerol, PH7.4 |

## Applications Recommended Dilution

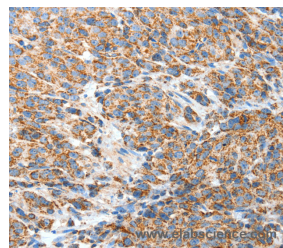
|            |               |
|------------|---------------|
| <b>WB</b>  | 1:1000-1:5000 |
| <b>IHC</b> | 1:50-1:200    |

## Data

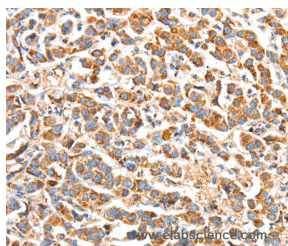


Western Blot analysis of HeLa, A431, 293T and Jurkat cell using BAK1 Polyclonal Antibody at dilution of 1:900

**Calculated Mw:23kDa**



Immunohistochemistry of paraffin-embedded Human esophagus cancer using BAK1 Polyclonal Antibody at dilution of 1:50



Immunohistochemistry of paraffin-embedded Human breast cancer using BAK1 Polyclonal Antibody at dilution of 1:50

## Preparation & Storage

**Storage** Store at -20°C. Avoid freeze / thaw cycles.

## Background

The protein encoded by this gene belongs to the BCL2 protein family. BCL2 family members form oligomers or heterodimers and act as anti- or pro-apoptotic regulators that are involved in a wide variety of cellular activities. This protein localizes to mitochondria, and functions to induce apoptosis. It interacts with and accelerates the opening of the

## For Research Use Only

A Reliable Research Partner in Life Science and Medicine

Toll-free: 1-888-852-8623

Web: [www.elabscience.com](http://www.elabscience.com)

Tel: 1-832-243-6086

Email: [techsupport@elabscience.com](mailto:techsupport@elabscience.com)

Fax: 1-832-243-6017

# BAK1 Polyclonal Antibody

Catalog Number: E-AB-10092 1 Publications



mitochondrial voltage-dependent anion channel, which leads to a loss in membrane potential and the release of cytochrome c. This protein also interacts with the tumor suppressor P53 after exposure to cell stress.

---

## For Research Use Only

A Reliable Research Partner in Life Science and Medicine

Toll-free: 1-888-852-8623

Tel: 1-832-243-6086

Fax: 1-832-243-6017

Web: [www.elabscience.com](http://www.elabscience.com)

Email: [techsupport@elabscience.com](mailto:techsupport@elabscience.com)