

KRT19 Monoclonal Antibody

catalog number: **AN200158P**

Note: Centrifuge before opening to ensure complete recovery of vial contents.

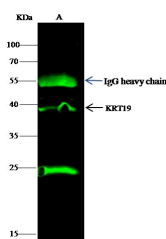
Description

Reactivity	Human
Immunogen	A synthetic peptide corresponding to the N-terminus of the human KRT19
Host	Mouse
Isotype	IgG3
Clone	2B14
Purification	Protein A
Buffer	0.2 µm filtered solution in PBS

Applications Recommended Dilution

WB	1:500-1:2000
FCM	1:25-1:100
IP	0.5-2 µL/mg of lysate

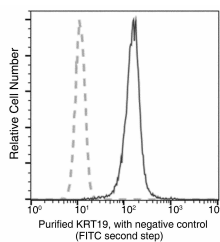
Data



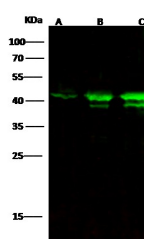
Immunoprecipitation analysis using 4 µL anti-KRT19 Monoclonal Antibody and 15 µL of 50 % Protein G agarose. Western blot was performed from the immunoprecipitate using KRT19 Monoclonal Antibody at a dilution of 1:100.

Lane A: 0.5 mg HepG2 Whole Cell Lysate

Observed-MW: 42 kDa
Calculated-MW: 44 kDa

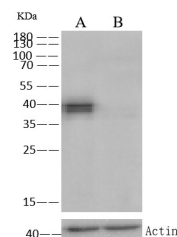


Flow cytometric analysis of Human KRT19 expression on A431 cells. The cells were treated according to manufacturer's manual, stained with purified anti-Human KRT19, then a FITC-conjugated second step antibody. The fluorescence histograms were derived from gated events with the forward and side light-scatter characteristics of intact cells.



Western Blot with KRT19 Monoclonal Antibody at dilution of 1:500 dilution. Lane A: HepG2 Whole Cell Lysate, Lane B: HCT116 Whole Cell Lysate, Lane C: A431 Whole Cell Lysate, Lysates/proteins at 30 µg per lane.

Observed-MW: 42 kDa
Calculated-MW: 44 kDa



Western Blot with KRT19 Monoclonal Antibody at dilution of 1:500 dilution. Lane A: HepG2 Whole Cell Lysate, Lane B: KRT19 knockout HepG2 Whole Cell Lysate, Lysates/proteins at 30 µg per lane.

Observed-MW: 42 kDa
Calculated-MW: 44 kDa

Preparation & Storage

For Research Use Only

Toll-free: 1-888-852-8623
Web: www.elabscience.com

Tel: 1-832-243-6086
Email: techsupport@elabscience.com

Fax: 1-832-243-6017

Rev. V1.0

Storage

This antibody can be stored at 2°C-8°C for one month without detectable loss of activity. Antibody products are stable for twelve months from date of receipt when stored at -20°C to -80°C. Preservative-Free. Avoid repeated freeze-thaw cycles.

Shipping

Ice bag

Background

Cytokeratin 19 is part of a subfamily of intermediate filament proteins and are characterized by a remarkable biochemical diversity, represented in Human epithelial tissues by at least 20 different polypeptides. Cytokeratins range in molecular weight from 40-68 kDa and isoelectric pH between 4.9 - 7.8. The individual Human cytokeratins are numbered 1 to 20. The various epithelia in the Human body usually express cytokeratins which are not only characteristic of the type of epithelium, but also related to the degree of maturation or differentiation within an epithelium. Cytokeratin subtype expression patterns are used to an increasing extent in the distinction of different types of epithelial malignancies. The cytokeratin antibodies are not only of assistance in the differential diagnosis of tumors using immunohistochemistry on tissue sections, but are also a useful tool in cytopathology and flow cytometric assays. For example, cytokeratin 19 is not expressed in hepatocytes, therefore, it is useful in the identification of liver metastasis.

For Research Use Only