

# MORC2 Polyclonal Antibody

Catalog Number:E-AB-18319



**Note:** Centrifuge before opening to ensure complete recovery of vial contents.

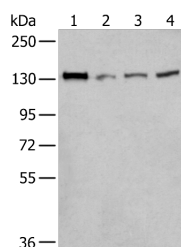
## Description

<b>Reactivity</b>	Human
<b>Immunogen</b>	Fusion protein of human MORC2
<b>Host</b>	Rabbit
<b>Isotype</b>	IgG
<b>Purification</b>	Antigen affinity purification
<b>Conjugation</b>	Unconjugated
<b>Formulation</b>	PBS with 0.05% NaN <sub>3</sub> and 40% Glycerol,pH7.4

## Applications Recommended Dilution

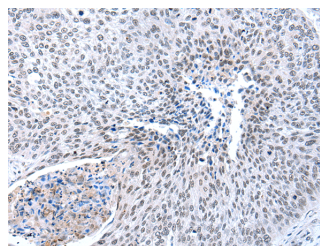
<b>WB</b>	1:500-1:2000
<b>IHC</b>	1:25-1:100
<b>ELISA</b>	1:5000-1:10000

## Data



Western blot analysis of 293T HeLa and A172 cell lysates using MORC2 Polyclonal Antibody at dilution of 1:300

**Observed MW:Refer to figures**  
**Calculated Mw:118 kDa**



Immunohistochemistry of paraffin-embedded Human lung cancer tissue using MORC2 Polyclonal Antibody at dilution of 1:25(×200)

## Preparation & Storage

**Storage** Store at -20°C. Avoid freeze / thaw cycles.

## Background

The CW domain is a structural module found in many vertebrate, parasitic and plant proteins. It consists of a mononuclear four-cysteine zinc-finger domain that plays a role in DNA binding, chromatin methylation and early embryonic development. ZCWCC1 (zinc finger CW-type coiled-coil domain protein 1), also known as MORC2 (MORC family CW-type zinc finger protein 2) or ZCW3, is a 1,032 amino acid protein that contains one CW-type zinc finger domain. ZCWCC1 is located on chromosome 22 and is ubiquitously expressed with highest expression in pancreas, smooth muscle and testis. Expression of ZCWCC1 is upregulated in hypoxia, a pathological condition characterized by an inadequate supply of oxygen in the blood.

## For Research Use Only

A Reliable Research Partner in Life Science and Medicine

Toll-free: 1-888-852-8623

Web: [www.elabscience.com](http://www.elabscience.com)

Tel: 1-832-243-6086

Email: [techsupport@elabscience.com](mailto:techsupport@elabscience.com)

Fax: 1-832-243-6017