

# Recombinant Human PLA2G1B/PLA2 Protein (His Tag)



Catalog Number: PKSH031384

**Note:** Centrifuge before opening to ensure complete recovery of vial contents.

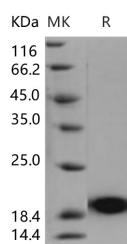
## Description

<b>Synonyms</b>	PLA2G1B; Phospholipase A2; Group IB phospholipase A2; PLA2; PLA2A; PPLA2
<b>Species</b>	Human
<b>Expression Host</b>	HEK293 Cells
<b>Sequence</b>	Met 1-Ser 148
<b>Accession</b>	NP_000919.1
<b>Calculated Molecular Weight</b>	16.2 kDa
<b>Observed molecular weight</b>	19 kDa
<b>Tag</b>	C-His
<b>Bioactivity</b>	Measured by its ability to hydrolyze 1-Hexadecanoyl-2-(1-pyrenedecanoyl)-sn-glycero-3-phosphomethanol. The specific activity is > 2,500 pmol/min/μg.

## Properties

<b>Purity</b>	> 92 % as determined by reducing SDS-PAGE.
<b>Endotoxin</b>	< 1.0 EU per μg of the protein as determined by the LAL method.
<b>Storage</b>	Generally, lyophilized proteins are stable for up to 12 months when stored at -20 to -80°C. Reconstituted protein solution can be stored at 4-8°C for 2-7 days. Aliquots of reconstituted samples are stable at < -20°C for 3 months.
<b>Shipping</b>	This product is provided as lyophilized powder which is shipped with ice packs.
<b>Formulation</b>	Lyophilized from sterile 10mM Tris, 5mM CaCl <sub>2</sub> , pH 8.0 Normally 5 % - 8 % trehalose, mannitol and 0.01 % Tween80 are added as protectants before lyophilization. Please refer to the specific buffer information in the printed manual.
<b>Reconstitution</b>	Please refer to the printed manual for detailed information.

## Data



> 92 % as determined by reducing SDS-PAGE.

## Background

phospholipase A2, also known as Phosphatidylcholine 2-acylhydrolase 1B, Group IB phospholipase A2, PLA2 and PLA2G1B, is a secreted protein which belongs to the phospholipase A2 family. Phospholipase A2 / PLA2G1B catalyzes the release of fatty acids from glycerol-3-phosphocholines. The best known varieties are the digestive enzymes secreted as zymogens by the pancreas of mammals. Sequences of pancreatic Phospholipase A2 / PLA2G1B enzymes from a variety of mammals have been reported. One striking feature of these enzymes is their close homology to venom phospholipases of snakes. Other forms of Phospholipase A2 / PLA2G1B have been isolated from brain, liver, lung, spleen, intestine,

## For Research Use Only

A Reliable Research Partner in Life Science and Medicine

Toll-free: 1-888-852-8623

Web: [www.elabscience.com](http://www.elabscience.com)

Tel: 1-832-243-6086

Email: [techsupport@elabscience.com](mailto:techsupport@elabscience.com)

Fax: 1-832-243-6017

# Recombinant Human PLA2G1B/PLA2 Protein (His Tag)



Catalog Number: PKSH031384

---

macrophages, leukocytes, erythrocytes, inflammatory exudates, chondrocytes, and platelets. Mice lacking in Phospholipase A2 / PLA2G1B are resistant to obesity and diabetes induced by feeding a diabetogenic high-fat/high-carbohydrate diet. Oral supplementation of a diabetogenic diet with the PLA2G1B inhibitor methyl indoxam effectively suppresses diet-induced obesity and diabetes. PLA2G1B inhibition may be a potentially effective oral therapeutic option for treatment of obesity and diabetes.

---

## For Research Use Only

A Reliable Research Partner in Life Science and Medicine

Toll-free: 1-888-852-8623

Web: [www.elabscience.com](http://www.elabscience.com)

Tel: 1-832-243-6086

Email: [techsupport@elabscience.com](mailto:techsupport@elabscience.com)

Fax: 1-832-243-6017