

Recombinant Human IGSF3/EWI-3 Protein (His Tag)

Catalog Number:PKSH031166



Note: Centrifuge before opening to ensure complete recovery of vial contents.

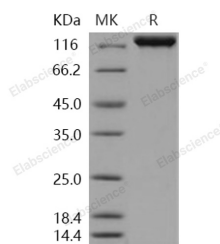
Description

Synonyms	EWI-3;LCDD;V8
Species	Human
Expression Host	HEK293 Cells
Sequence	Met 1-Ala 1124
Accession	O75054-1
Calculated Molecular Weight	126.6 kDa
Observed molecular weight	140 kDa
Tag	C-His

Properties

Purity	> 98 % as determined by reducing SDS-PAGE.
Endotoxin	< 1.0 EU per µg of the protein as determined by the LAL method.
Storage	Generally, lyophilized proteins are stable for up to 12 months when stored at -20 to -80°C. Reconstituted protein solution can be stored at 4-8°C for 2-7 days. Aliquots of reconstituted samples are stable at < -20°C for 3 months.
Shipping	This product is provided as lyophilized powder which is shipped with ice packs.
Formulation	Lyophilized from sterile PBS, pH 7.4 Normally 5 % - 8 % trehalose, mannitol and 0.01% Tween80 are added as protectants before lyophilization. Please refer to the specific buffer information in the printed manual.
Reconstitution	Please refer to the printed manual for detailed information.

Data



> 98 % as determined by reducing SDS-PAGE.

Background

Immunoglobulin superfamily member 3 (IGSF3), also known as Glu-Trp-Ile EWI motif-containing protein 3, IgSF3 and EWI-3 and IGSF3, is a single-pass type I membrane protein which belongs to the EWI subfamily of the Ig Superfamily of molecules. IGSF3 has an overall structural similarity and strong sequence similarity to V7, a human leukocyte surface protein. IGSF3 contains eight Ig-like C2-type (immunoglobulin-like) domains. IGSF3 is expressed in a wide range of tissues with high expression in Placenta, kidney and lung. EWI-2 is part of a novel Ig subfamily that includes EWI-F (F2alpha receptor regulatory protein (FPRP), CD9P-1), EWI-3 (IGSF3), and EWI-101 (CD101). All four members of this Ig subfamily contain a Glu-Trp-Ile (EWI) motif not seen in other Ig proteins. Human IGSF3 shares 92 % aa identity with mouse IGSF3.

For Research Use Only

A Reliable Research Partner in Life Science and Medicine

Toll-free: 1-888-852-8623

Web: www.elabscience.com

Tel: 1-832-243-6086

Email: techsupport@elabscience.com

Fax: 1-832-243-6017