

RNASEH1 Polyclonal Antibody

Catalog Number:E-AB-68012



Note: Centrifuge before opening to ensure complete recovery of vial contents.

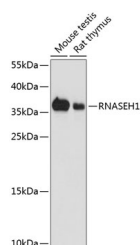
Description

Reactivity	Human,Mouse,Rat
Immunogen	Recombinant fusion protein of human RNASEH1 (NP_002927.2).
Host	Rabbit
Isotype	IgG
Purification	Affinity purification
Conjugation	Unconjugated
Formulation	PBS with 0.02% sodium azide, 50% glycerol, pH7.3.

Applications Recommended Dilution

WB	1:500-1:2000
-----------	--------------

Data



Western blot analysis of extracts of various cell lines using RNASEH1 Polyclonal Antibody at dilution of 1:1000.

Observed MW:37kDa
Calculated Mw:32kDa

Preparation & Storage

Storage Store at -20°C. Avoid freeze / thaw cycles.

Background

This gene encodes an endonuclease that specifically degrades the RNA of RNA-DNA hybrids and is necessary for DNA replication and repair. This enzyme is present in both mitochondria and nuclei, which are resulted from translation of a single mRNA with two in-frame initiation start codons. The use of the first start codon produces the mitochondrial isoform and the use of the second start codon produces the nuclear isoform. The production of the mitochondrial isoform is modulated by an upstream open reading frame (uORF) which overlaps the first initiation start codon in human. An alternately spliced transcript variant has been found which encodes a shorter isoform. This gene has three pseudogenes; two of them are at different locations of chromosome 17 and one of them is on chromosome 1q32.2.

For Research Use Only

A Reliable Research Partner in Life Science and Medicine

Toll-free: 1-888-852-8623

Web: www.elabscience.com

Tel: 1-832-243-6086

Email: techsupport@elabscience.com

Fax: 1-832-243-6017