

beta actin Polyclonal Antibody

catalog number: E-AB-40517

Note: Centrifuge before opening to ensure complete recovery of vial contents.

Description

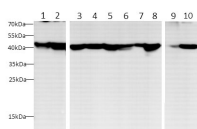
Reactivity	Human;Mouse;Rat;Zebrafish;Monkey
Immunogen	Recombinant human Beta actin protein.
Host	Rabbit
Isotype	IgG
Purification	Antigen Affinity Purification
Conjugation	Unconjugated
buffer	PBS with 0.05% proclin 300, 1% protective protein and 50% glycerol,pH7.4

Applications

Recommended Dilution

WB	1:1000-2000
IF	1:100-400

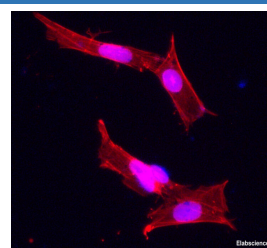
Data



Western blot with anti-beta Actin Polyclonal antibody at dilution of 1:1000.lane 1: HT-29 whole cell lysate,lane 2:Jurkat whole cell lysate,lane 3:Mouse spleen,lane 4:Rat spleen,lane 5:Mouse lung,lane 6: Rat lung,lane 7:RAW264.7 whole cell lysate,lane 8:C6 whole cell lysate,lane 9:Zebrafish,lane 10:Vero

Observed-MV:43 kDa

Calculated-MV:43 kDa



Immunohistochemical analysis of SH-SY5Y, using anti-beta actin Polyclonal Antibody at 1:100 dilution.

Preparation & Storage

Storage	Store at -20°C Valid for 12 months. Avoid freeze / thaw cycles.
Shipping	The product is shipped with ice pack,upon receipt,store it immediately at the temperature recommended.

Background

Beta-actin (ACTB/ACTB) is one of six different actin isoforms in humans. Actins are highly conserved proteins that are involved in cell motility, structure and integrity. Beta actin is a major constituent of the contractile apparatus and one of th

For Research Use Only