

Recombinant Rat MMP-12 protein (His tag)

Catalog Number:PDER100037



Note: Centrifuge before opening to ensure complete recovery of vial contents.

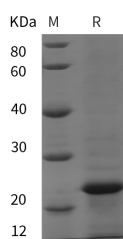
Description

| | |
|------------------------------------|--|
| Synonyms | Macrophage metalloelastase;MME;Matrix metalloproteinase-12;MMP-12;Mmp12;Mme;Mmel |
| Species | Rat |
| Expression Host | E.coli |
| Sequence | Ala 286-Phe 463 |
| Accession | Q63341 |
| Calculated Molecular Weight | 19.5 kDa |
| Observed molecular weight | 24 kDa |
| Tag | N-His |

Properties

| | |
|-----------------------|---|
| Purity | > 95 % as determined by reducing SDS-PAGE. |
| Endotoxin | Please contact us for more information. |
| Storage | Generally, lyophilized proteins are stable for up to 12 months when stored at -20 to -80°C. Reconstituted protein solution can be stored at 4-8°C for 2-7 days. Aliquots of reconstituted samples are stable at < -20°C for 3 months. |
| Shipping | This product is provided as lyophilized powder which is shipped with ice packs. |
| Formulation | Lyophilized from sterile PBS, pH 7.4. Normally 5 % - 8 % trehalose, mannitol and 0.01 % Tween80 are added as protectants before lyophilization. Please refer to the specific buffer information in the printed manual. |
| Reconstitution | Please refer to the printed manual for detailed information. |

Data



> 95 % as determined by reducing SDS-PAGE.

Background

Matrix metalloproteinase-12 (MMP12) is a secreted protein. It contains 4 hemopexin repeats and belongs to the peptidase M10A family. MMP12 may be involved in tissue injury and remodeling and have significant elastolytic activity. It can accept large and small amino acids at the P1' site, but has a preference for leucine. Aromatic or hydrophobic residues are preferred at the P1 site, with small hydrophobic residues (preferably alanine) occupying P3.

For Research Use Only

A Reliable Research Partner in Life Science and Medicine

Toll-free: 1-888-852-8623

Web: www.elabscience.com

Tel: 1-832-243-6086

Email: techsupport@elabscience.com

Fax: 1-832-243-6017