

# CREB1 Polyclonal Antibody

catalog number: E-AB-70099

**Note:** Centrifuge before opening to ensure complete recovery of vial contents.

## Description

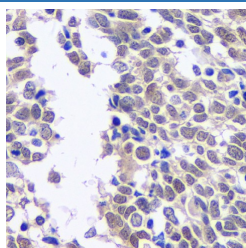
|                     |   |
|---------------------|---|
| <b>Reactivity</b>   | Human   |
| <b>Immunogen</b>    | KLH conjugated Synthetic peptide corresponding to Mouse CREB1   |
| <b>Host</b>         | Rabbit  |
| <b>Isotype</b>      | IgG   |
| <b>Purification</b> | Affinity purification   |
| <b>Conjugation</b>  | Unconjugated  |
| <b>buffer</b>       | Phosphate buffered solution, pH 7.4, containing 0.05% stabilizer, 1% protein protectant and 50% glycerol. |

## Applications

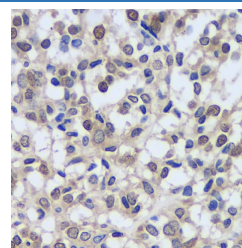
## Recommended Dilution

|            |             |
|------------|-------------|
| <b>IHC</b> | 1:200-1:800 |
|------------|-------------|

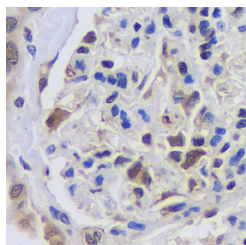
## Data



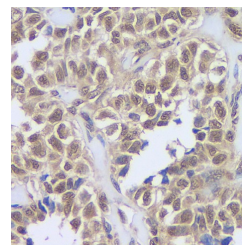
Immunohistochemistry analysis of paraffin-embedded human lung cancer using CREB1 Polyclonal Antibody at dilution of 1:200.



Immunohistochemistry analysis of paraffin-embedded human liver cancer using CREB1 Polyclonal Antibody at dilution of 1:200.



Immunohistochemistry analysis of paraffin-embedded human kidney using CREB1 Polyclonal Antibody at dilution of 1:200.



Immunohistochemistry analysis of paraffin-embedded human stomach cancer using CREB1 Polyclonal Antibody at dilution of 1:200.

## Preparation & Storage

|                 |  |
|-----------------|--|
| <b>Storage</b>  | Store at -20°C Valid for 12 months. Avoid freeze / thaw cycles.  |
| <b>Shipping</b> | The product is shipped with ice pack, upon receipt, store it immediately at the temperature recommended. |

## Background

This gene encodes a transcription factor that is a member of the leucine zipper family of DNA binding proteins. This protein binds as a homodimer to the cAMP-responsive element, an octameric palindrome. The protein is phosphorylated by several protein kinases, and induces transcription of genes in response to hormonal stimulation of the cAMP pathway. Alternate splicing of this gene results in two transcript variants encoding different isoforms.

## For Research Use Only