

# Recombinant Human IL-22BP/IL-22RA2 Protein (Fc Tag)



Catalog Number:PKSH032577

**Note:** Centrifuge before opening to ensure complete recovery of vial contents.

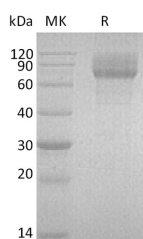
## Description

<b>Synonyms</b>	Interleukin-22 Receptor Subunit Alpha-2;IL-22 Receptor Subunit Alpha-2;IL-22R-Alpha-2;IL-22RA2;Cytokine Receptor Class-II Member 10;Cytokine Receptor Family 2 Member 10;CRF2-10;Cytokine Receptor Family Type 2 Soluble 1;CRF2-S1;Interleukin-22-Binding Protein;IL-22BP;IL22BP;ZcytoR16;IL22RA2
<b>Species</b>	Human
<b>Expression Host</b>	HEK293 Cells
<b>Sequence</b>	Thr 22-Pro231
<b>Accession</b>	Q969J5-2
<b>Calculated Molecular Weight</b>	51.8 kDa
<b>Observed molecular weight</b>	80-100 kDa
<b>Tag</b>	C-Fc

## Properties

<b>Purity</b>	> 95 % as determined by reducing SDS-PAGE.
<b>Endotoxin</b>	< 1.0 EU per µg of the protein as determined by the LAL method.
<b>Storage</b>	Generally, lyophilized proteins are stable for up to 12 months when stored at -20 to -80°C. Reconstituted protein solution can be stored at 4-8°C for 2-7 days. Aliquots of reconstituted samples are stable at < -20°C for 3 months.
<b>Shipping</b>	This product is provided as lyophilized powder which is shipped with ice packs.
<b>Formulation</b>	Lyophilized from a 0.2 µm filtered solution of 20mM PB, 150mM NaCl, pH 7.4. Normally 5 % - 8 % trehalose, mannitol and 0.01% Tween80 are added as protectants before lyophilization. Please refer to the specific buffer information in the printed man
<b>Reconstitution</b>	Please refer to the printed manual for detailed information.

## Data



> 95 % as determined by reducing SDS-PAGE.

## Background

Interleukin-22 Receptor Subunit  $\alpha$ -2 (IL22RA2) belongs to the type II cytokine receptor family. IL22RA2 is a secreted protein and contains three fibronectin type-III domains. IL22RA2 is widely expressed in many tissues. IL22RA2 functions as an IL22 antagonist and may be important in the regulation of inflammatory response. Three alternatively spliced transcript variants encoding distinct isoforms have been described.

## For Research Use Only

A Reliable Research Partner in Life Science and Medicine

Toll-free: 1-888-852-8623

Web: [www.elabscience.com](http://www.elabscience.com)

Tel: 1-832-243-6086

Email: [techsupport@elabscience.com](mailto:techsupport@elabscience.com)

Fax: 1-832-243-6017