

HES2 Polyclonal Antibody

Catalog Number: E-AB-70254



Note: Centrifuge before opening to ensure complete recovery of vial contents.

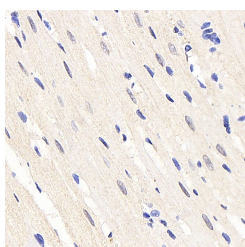
Description

| | |
|---------------------|--|
| Reactivity | Rat |
| Immunogen | KLH conjugated Synthetic peptide corresponding to Mouse HES2 |
| Host | Rabbit |
| Isotype | IgG |
| Purification | Affinity purification |
| Conjugation | Unconjugated |
| Formulation | PBS with 0.02% sodium azide, 1% protective protein and 50% glycerol, pH7.4 |

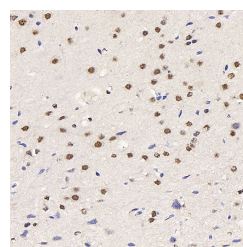
Applications Recommended Dilution

| | |
|------------|-------------|
| IHC | 1:100-1:400 |
|------------|-------------|

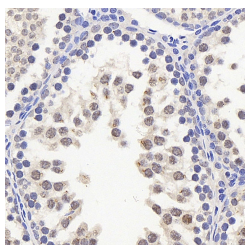
Data



Immunohistochemistry analysis of paraffin-embedded rat heart using HES2 Polyclonal Antibody at dilution of 1:200.



Immunohistochemistry analysis of paraffin-embedded rat brain using HES2 Polyclonal Antibody at dilution of 1:200.



Immunohistochemistry analysis of paraffin-embedded rat testis using HES2 Polyclonal Antibody at dilution of 1:200.

Preparation & Storage

Storage Store at -20°C. Avoid freeze / thaw cycles.

Background

HES2 (Hes Family BHLH Transcription Factor 2) is a Protein Coding gene. Among its related pathways are PI3K-Akt signaling pathway. Gene Ontology (GO) annotations related to this gene include transcription factor binding and double-stranded DNA binding.

For Research Use Only

A Reliable Research Partner in Life Science and Medicine

Toll-free: 1-888-852-8623

Web: www.elabscience.com

Tel: 1-832-243-6086

Email: techsupport@elabscience.com

Fax: 1-832-243-6017