

Recombinant Human METAP1 Protein (Fc Tag)

Catalog Number:PKSH031734



Note: Centrifuge before opening to ensure complete recovery of vial contents.

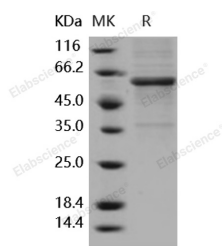
Description

Synonyms	Methionine aminopeptidase 1;MAP 1;MetAP 1;Peptidase M 1;METAP1;MAP1A;MetAP1A
Species	Human
Expression Host	HEK293 Cells
Sequence	Met 1-Phe 272
Accession	NP_055958.2
Calculated Molecular Weight	57.0 kDa
Observed molecular weight	60-65 kDa
Tag	N-hFc

Properties

Purity	> 85 % as determined by reducing SDS-PAGE.
Endotoxin	< 1.0 EU per µg of the protein as determined by the LAL method.
Storage	Generally, lyophilized proteins are stable for up to 12 months when stored at -20 to -80°C. Reconstituted protein solution can be stored at 4-8°C for 2-7 days. Aliquots of reconstituted samples are stable at < -20°C for 3 months.
Shipping	This product is provided as lyophilized powder which is shipped with ice packs.
Formulation	Lyophilized from sterile PBS, pH 7.4 Normally 5 % - 8 % trehalose, mannitol and 0.01 % Tween80 are added as protectants before lyophilization. Please refer to the specific buffer information in the printed manual.
Reconstitution	Please refer to the printed manual for detailed information.

Data



> 85 % as determined by reducing SDS-PAGE.

Background

Processing of the N-terminal initiator methionine or formylated methionine is an essential cellular process conserved from prokaryotes to eukaryotes. The proteolytic removal of N-terminal methionine from nascent peptides is catalyzed by a family of enzymes known as methionine aminopeptidases (MetAPs) and is essential for cell growth. METAP1 and METAP2 have different substrate specificity due to the differences in both size and shape of the active sites. As a member of the M24 family of metalloproteases, METAP1 plays an important role in G(2)/M phase regulation of the cell cycle and may serve as a promising target for the discovery and development of new anticancer agents.

For Research Use Only

A Reliable Research Partner in Life Science and Medicine

Toll-free: 1-888-852-8623

Web: www.elabscience.com

Tel: 1-832-243-6086

Email: techsupport@elabscience.com

Fax: 1-832-243-6017