

# Recombinant Human Tetherin/BST2 Protein (Fc Tag)

Catalog Number:PKSH030644



**Note:** Centrifuge before opening to ensure complete recovery of vial contents.

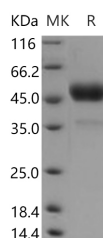
## Description

<b>Synonyms</b>	Bone Marrow Stromal Antigen 2;BST-2;HM1.24 Antigen;Tetherin;CD317;BST2
<b>Species</b>	Human
<b>Expression Host</b>	HEK293 Cells
<b>Sequence</b>	Asn49-Ser160
<b>Accession</b>	Q10589
<b>Calculated Molecular Weight</b>	41.0 kDa
<b>Observed molecular weight</b>	51 kDa
<b>Tag</b>	N-hFc

## Properties

<b>Purity</b>	> 90 % as determined by reducing SDS-PAGE.
<b>Endotoxin</b>	< 1.0 EU per µg of the protein as determined by the LAL method.
<b>Storage</b>	Generally, lyophilized proteins are stable for up to 12 months when stored at -20 to -80°C. Reconstituted protein solution can be stored at 4-8°C for 2-7 days. Aliquots of reconstituted samples are stable at < -20°C for 3 months.
<b>Shipping</b>	This product is provided as lyophilized powder which is shipped with ice packs.
<b>Formulation</b>	Lyophilized from sterile PBS, pH 7.4 Normally 5 % - 8 % trehalose, mannitol and 0.01% Tween80 are added as protectants before lyophilization. Please refer to the specific buffer information in the printed manual.
<b>Reconstitution</b>	Please refer to the printed manual for detailed information.

## Data



> 90 % as determined by reducing SDS-PAGE.

## Background

CLM-9; also known as TREM4; is a receptor which belongs to the TREM family. The TREM family of receptors regulates the activity of various cell types of the immune system including neutrophils; monocyte/macrophages; microglia; and dendritic cells. CLM-9 may mediate L-selectin-dependent lymphocyte rollings. It binds SELL in a calcium dependent manner. CLM-9 also binds lymphocyte which suggests that it functions in lymphocyte adhesion. The major CLM-9 transcript is expressed highly in human heart; skeletal muscle; and placenta. The mouse protein has been shown to be expressed in capillary endothelial cells. Human CLM-9 mediates the uptake of human IgA2 and mouse IgM.

## For Research Use Only

A Reliable Research Partner in Life Science and Medicine

Toll-free: 1-888-852-8623

Web: [www.elabscience.com](http://www.elabscience.com)

Tel: 1-832-243-6086

Email: [techsupport@elabscience.com](mailto:techsupport@elabscience.com)

Fax: 1-832-243-6017