

# Recombinant Human LRRC3B Protein (His Tag)

Catalog Number: PKSH032692



**Note:** Centrifuge before opening to ensure complete recovery of vial contents.

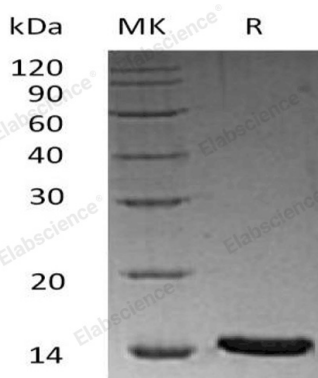
## Description

<b>Species</b>	Human
<b>Mol_Mass</b>	20.0 kDa
<b>Accession</b>	Q96PB8
<b>Bio-activity</b>	Not validated for activity

## Properties

<b>Purity</b>	> 95 % as determined by reducing SDS-PAGE.
<b>Endotoxin</b>	< 1.0 EU per µg of the protein as determined by the LAL method.
<b>Storage</b>	Generally, lyophilized proteins are stable for up to 12 months when stored at -20 to -80 °C. Reconstituted protein solution can be stored at 4-8°C for 2-7 days. Aliquots of reconstituted samples are stable at < -20°C for 3 months.
<b>Shipping</b>	This product is provided as lyophilized powder which is shipped with ice packs.
<b>Formulation</b>	Lyophilized from a 0.2 µm filtered solution of 20mM Tris-HCl, 150mM NaCl, pH 8.0. Normally 5% - 8% trehalose, mannitol and 0.01% Tween 80 are added as protectants before lyophilization. Please refer to the specific buffer information in the printed manual.
<b>Reconstitution</b>	Please refer to the printed manual for detailed information.

## Data



> 95 % as determined by reducing SDS-PAGE.

## Background

Leucine-Rich Repeat-Containing Protein 3B (LRRC3B) belongs to the LRRC3 family. LRRC3B is single-pass membrane protein and contains three leucine-rich repeats, one LRRCT domain, and one LRRNT domain. LRR-containing proteins, of which there are greater than 2,000, participate in many important processes, including plant and animal immunity, hormone-receptor interactions, cell adhesion, signal transduction, regulation of gene expression, and apoptosis. A number of microarray expression profiling studies on human cancers have shown that LRRC3B is down-regulated in gastric, breast, colon, testis, prostate and brain cancers, suggesting LRRC3B involvement in carcinogenesis

## For Research Use Only

A Reliable Research Partner in Life Science and Medicine  
Tel:400-999-2100

Email:[techsupport@elabscience.cn](mailto:techsupport@elabscience.cn)

Web:[www.elabscience.cn](http://www.elabscience.cn)

Rev. V3.5