

Recombinant PPM1G Monoclonal Antibody

catalog number: **AN300394P**

Note: Centrifuge before opening to ensure complete recovery of vial contents.

Description

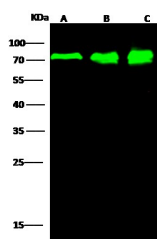
Reactivity	Human
Immunogen	Recombinant Human PPM1G protein
Host	Rabbit
Isotype	IgG
Clone	12F11
Purification	Protein A
Buffer	0.2 µm filtered solution in PBS

Applications

Recommended Dilution

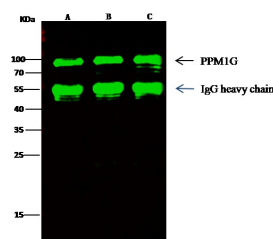
WB	1:500-1:2000
IP	1-4 µL/mg of lysate

Data



Western Blot with PPM1G Monoclonal Antibody at dilution of 1:500. Lane A: HeLa Whole Cell Lysate, Lane B: 293T Whole Cell Lysate, Lane C: Jurkat Whole Cell Lysate, Lysates/proteins at 30 µg per lane.

Observed-MW:70 kDa
Calculated-MW:59 kDa



Immunoprecipitation analysis using 2 µL anti-PPM1G Monoclonal Antibody and 15 µL of 50 % Protein G agarose. Western blot was performed from the immunoprecipitate using PPM1G Monoclonal Antibody at a dilution of 1:50.

Lane A:0.5 mg HeLa Whole Cell Lysate, Lane B:0.5 mg 293T Whole Cell Lysate, Lane C:0.5 mg Jurkat Whole Cell Lysate

Observed-MW:70 kDa
Calculated-MW:59 kDa

Preparation & Storage

Storage	This antibody can be stored at 2°C-8°C for one month without detectable loss of activity. Antibody products are stable for twelve months from date of receipt when stored at -20°C to -80°C. Preservative-Free. Avoid repeated freeze-thaw cycles.
Shipping	Ice bag

Background

The protein encoded by this gene is a member of the PP2C family of Ser/Thr protein phosphatases. PP2C family members are known to be negative regulators of cell stress response pathways. This phosphatase is found to be responsible for the dephosphorylation of Pre-mRNA splicing factors, which is important for the formation of functional spliceosome. Studies of a similar gene in mice suggested a role of this phosphatase in regulating cell cycle progression.

For Research Use Only