

**Note:** Centrifuge before opening to ensure complete recovery of vial contents.

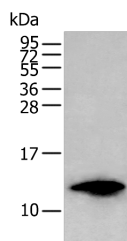
## Description

<b>Reactivity</b>	Human, Mouse, Rat
<b>Immunogen</b>	Synthetic peptide of human FSHB
<b>Host</b>	Rabbit
<b>Isotype</b>	IgG
<b>Purification</b>	Antigen affinity purification
<b>Conjugation</b>	Unconjugated
<b>Formulation</b>	PBS with 0.05% NaN <sub>3</sub> and 40% Glycerol,pH7.4

## Applications Recommended Dilution

<b>WB</b>	1:500-1:2000
<b>ELISA</b>	1:5000-1:10000

## Data



Western blot analysis of HL-60 cell lysate using FSHB Polyclonal Antibody at dilution of 1:350

**Observed MW:Refer to figures**

**Calculated Mw:15 kDa**

## Preparation & Storage

**Storage** Store at -20°C. Avoid freeze / thaw cycles.

## Background

Follicle stimulating hormone enables ovarian folliculogenesis to the antral follicle stage and is essential for Sertoli cell proliferation and maintenance of sperm quality in the testis. Members of the pituitary glycoprotein hormone family, of which FSH is one consist of a shared alpha chain and a beta chain encoded by a separate gene. The FSH beta gene encodes the beta subunit of follicle stimulating hormone.

## For Research Use Only

A Reliable Research Partner in Life Science and Medicine

Toll-free: 1-888-852-8623

Web: [www.elabscience.com](http://www.elabscience.com)

Tel: 1-832-243-6086

Email: [techsupport@elabscience.com](mailto:techsupport@elabscience.com)

Fax: 1-832-243-6017