

## PE Anti-Mouse Ly-49C/I Antibody[5E6]

Catalog Number: AN00659D

Note: Centrifuge before opening to ensure complete recovery of vial contents.

### Description

Reactivity	Mouse
Host	mouse
Isotype	mouse IgG2a, κ
Clone No.	5E6
Isotype Control	PE Mouse IgG2a, κ Isotype Control[C1.18.4] [Product E-AB-F09802D]
Conjugation	PE
Conjugation Information	PE is designed to be excited by the Blue (488 nm), Green (532 nm) and Yellow-Green (561 nm) lasers and detected using an optical filter centered near 575 nm (e.g., a 585/42 nm bandpass filter).
Storage Buffer	Phosphate buffered solution, pH 7.2, containing 0.09% stabilizer.

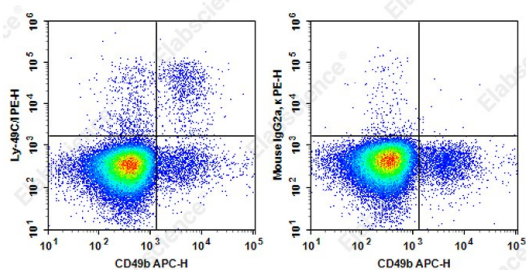
### Applications

### Recommended usage

FCM

Each lot of this antibody is quality control tested by flow cytometric analysis. **The amount of the reagent is suggested to be used 5 μL of antibody per test (million cells in 100 μL staining volume or per 100 μL of whole blood).** Please check your vial before the experiment. Since applications vary, the appropriate dilutions must be determined for individual use.

### Data



Staining of C57BL/6 murine splenocytes cells with APC Anti-Mouse 49b Antibody and PE Anti-Mouse Ly-49C/I Antibody[5E6] (left) or PE Mouse IgG2a, κ Isotype Control (right). Total viable cells were used for analysis.

### Preparation & Storage

Storage	Keep as concentrated solution. This product can be stored at 2-8°C for 24 months. Please protected from prolonged exposure to light and do not freeze.
Shipping	Ice bag

### Antigen Information

Alternate Names	Ly49C;Ly49I
Uniprot ID	Q64329;Q2TJJ8
Gene ID	16634;16640

### For Research Use Only

**Background**

The 5E6 (also known as clone SW5E6) antibody reacts with Ly-49C[BALB], Ly-49C[B6], Ly-49C[NZB], and Ly-49I[B6], inhibitory receptors which are expressed on subsets of natural killer (NK) cells and NK-1.1+ (or DX5+) T lymphocytes (NK-T cells) in all strains tested except C57BR and RIII, on a population of memory CD8+ T lymphocytes and NK1.1+  $\gamma\delta$  T cells in C57BL/6 mice, and on a distinct subset of B-1 cells of BALB/c and C57BL/6 mice. The proportion of NK T cells expressing Ly-49C/I is higher (2-5 fold) in thymus than in liver (immature and mature NK T cells, respectively), and there is evidence that the down-regulation of Ly-49 receptor expression is necessary for normal NK T-cell development. Most NK cells express a single allele of Ly-49C, although occasionally they may express more than one allele. The Ly-49 family of NK-cell receptors are disulfide-linked type-II transmembrane protein homodimers with extracellular carbohydrate-recognition domains (CRD) that bind to MHC class I alloantigens. The Ly-49 family members are expressed independently, such that an individual NK or T cell may display more than one class of Ly-49 receptor homodimers. The 5E6 antibody is specific for the Ly-49C CRD. The Ly-49C[BALB] and Ly-49C[B6] alloantigens bind to MHC class I antigens of the b, d, k, and s haplotypes, and the 5E6 antibody blocks this binding. Binding of Ly-49C[BALB]- and Ly-49C[B6]- expressing transfectants to lymphoblasts of H-2[f], H-2[q], H-2[r], and H-2[v] strains has also been detected. Ly-49I[B6] transfectants bind H-2[r] lymphoblasts and bind much more weakly to the b, d, k, q, s, and v haplotypes. The levels of the Ly-49 inhibitory receptors are down-regulated by their ligands in vivo, and the various levels of expression of an Ly-49 inhibitory receptor may affect the specificity of NK cells. Ly-49C is specifically downregulated in the presence of H-2K[b] class I molecules (one of the Ly-49C ligand s). Ly-49C[+] and/or Ly-49I[+] cells mediate allogeneic and hybrid resistance to H-2d bone marrow transplantation. In vitro and in vivo studies suggest that the Ly-49C and/or Ly-49I receptors mediate negative regulation of NK-cell cytolytic activity via tyrosine phosphorylation of their ITIMs (Immunoreceptor Tyrosine-based Inhibitory Motifs).