

## PE/Elab Fluor® 594 Anti-Human IL-1 beta Antibody[CRM56]

Catalog Number: AN00842P

Note: Centrifuge before opening to ensure complete recovery of vial contents.

### Description

<b>Reactivity</b>	Human
<b>Host</b>	Mouse
<b>Isotype</b>	Mouse IgG1, κ
<b>Clone No.</b>	CRM56
<b>Isotype Control</b>	PE/Elab Fluor® 594 Mouse IgG1, κ Isotype Control[MOPC-21] [Product E-AB-F09792P]
<b>Conjugation</b>	PE/Elab Fluor® 594
<b>Conjugation Information</b>	PE/Elab Fluor® 594 is designed to be excited by the blue (488 nm), Green (532 nm) and yellow-green (561 nm) lasers and detected using an optical filter centered near 620 nm (e.g., a 610/20 nm bandpass filter).
<b>Storage Buffer</b>	Phosphate buffered solution, pH 7.2, containing 0.09% stabilizer.

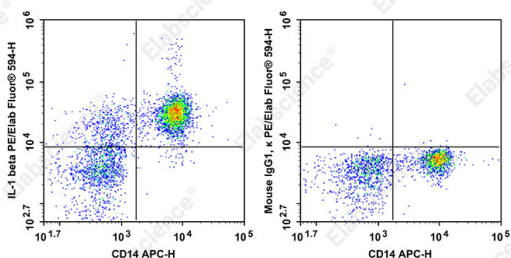
### Applications

### Recommended usage

#### FCM

Each lot of this antibody is quality control tested by flow cytometric analysis. **The amount of the reagent is suggested to be used 5 μL of antibody per test (million cells in 100 μL staining volume or per 100 μL of whole blood).** Please check your vial before the experiment. Since applications vary, the appropriate dilutions must be determined for individual use.

### Data



LPS-stimulated human peripheral blood monocytes surface stained with APC Anti-Human CD14 Antibody then intracellular stained with PE/Elab Fluor® 594 Anti-Human IL-1 beta Antibody[CRM56](left) or PE/Elab Fluor® 594 Mouse IgG1, κ Isotype Control (right). Cells in the monocytes gate were used for analysis.

### Preparation & Storage

<b>Storage</b>	Keep as concentrated solution. This product can be stored at 2-8°C for 24 months. Please protected from prolonged exposure to light and do not freeze.
<b>Shipping</b>	Ice bag

### Antigen Information

<b>Alternate Names</b>	IL-1 beta;IL1B;IL1F2;IL-1;AN00842
------------------------	-----------------------------------

### For Research Use Only

<b>Uniprot ID</b>	P01584
<b>Gene ID</b>	3553
<b>Background</b>	The CRM56 antibody reacts with human and baboon interleukin-1 beta; (IL-1 beta). IL-1 beta is a 17 kDa factor secreted primarily by monocytes. IL-1 has effects on T-helper cells, inducing IL-2 secretion and expression of IL-2 receptors. IL-1 has effects on B cells, promoting cell proliferation and immunoglobulin synthesis.