

Recombinant Cytokeratin 10 Monoclonal Antibody

catalog number: AN301158L

Note: Centrifuge before opening to ensure complete recovery of vial contents.

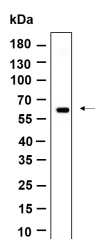
Description

Reactivity	Human;Mouse;Rat
Immunogen	Recombinant Human Cytokeratin 10 protein
Host	Rabbit
Isotype	IgG, κ
Clone	11G7
Purification	Protein A
Buffer	PBS, 50% glycerol, 0.05% Proclin 300, 0.05% protein protectant.

Applications

Applications	Recommended Dilution
IHC	1:200-1:1000
WB	1:2000-1:10000

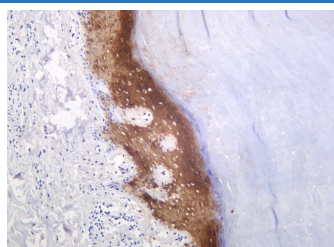
Data



Western Blot with Recombinant Cytokeratin 10 Monoclonal Antibody at dilution of 1:1000 dilution. Lane A: Mouse skin lysate.

Observed-MW:59 kDa

Calculated-MW:59 kDa



Immunohistochemistry of paraffin-embedded human skin using Recombinant Cytokeratin 10 Monoclonal Antibody at dilution of 1:200.

Preparation & Storage

Storage	Store at -20°C Valid for 12 months. Avoid freeze / thaw cycles.
Shipping	Ice bag

Background

This gene encodes a member of the type I (acidic) cytokeratin family, which belongs to the superfamily of intermediate filament (IF) proteins. Keratins are heteropolymeric structural proteins which form the intermediate filament. These filaments, along with actin microfilaments and microtubules, compose the cytoskeleton of epithelial cells. Mutations in this gene are associated with epidermolytic hyperkeratosis. This gene is located within a cluster of keratin family members on chromosome 17q21.

For Research Use Only