

Recombinant ASGPR1 Monoclonal Antibody

catalog number: AN300205P

Note: Centrifuge before opening to ensure complete recovery of vial contents.

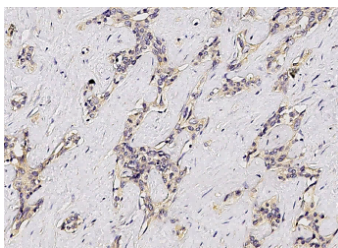
Description

Reactivity	Human
Immunogen	Recombinant Human ASGPR1 protein
Host	Rabbit
Isotype	IgG
Clone	8C8
Purification	Protein A
Buffer	0.2 µm filtered solution in PBS

Applications Recommended Dilution

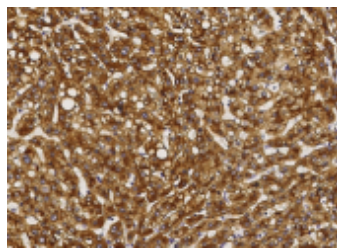
IHC-P	1:100-1:500
--------------	-------------

Data



Immunohistochemistry of paraffin-embedded human

hepatoma using ASGPR1 Monoclonal Antibody at dilution of 1:200.



Immunohistochemistry of paraffin-embedded human

cirrhosis using ASGPR1 Monoclonal Antibody at dilution of 1:200.

Preparation & Storage

Storage	This antibody can be stored at 2°C-8°C for one month without detectable loss of activity. Antibody products are stable for twelve months from date of receipt when stored at -20°C to -80°C. Preservative-Free. Avoid repeated freeze-thaw cycles.
Shipping	Ice bag

Background

This gene encodes a subunit of the asialoglycoprotein receptor. This receptor is a transmembrane protein that plays a critical role in serum glycoprotein homeostasis by mediating the endocytosis and lysosomal degradation of glycoproteins with exposed terminal galactose or N-acetylgalactosamine residues. The asialoglycoprotein receptor may facilitate hepatic infection by multiple viruses including hepatitis B, and is also a target for liver-specific drug delivery. The asialoglycoprotein receptor is a hetero-oligomeric protein composed of major and minor subunits, which are encoded by different genes. The protein encoded by this gene is the more abundant major subunit. Alternatively spliced transcript variants encoding multiple isoforms have been observed for this gene.

For Research Use Only