

Recombinant Thrombomodulin Monoclonal Antibody

catalog number: **AN301740L**

Note: Centrifuge before opening to ensure complete recovery of vial contents.

Description

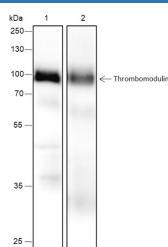
Reactivity	Human;
Immunogen	Recombinant human Thrombomodulin fragment
Host	Rabbit
Isotype	IgG, κ
Clone	A448
Purification	Protein A purified
Buffer	PBS, 50% glycerol, 0.05% Proclin 300, 0.05% protein protectant.

Applications

Recommended Dilution

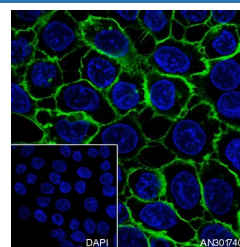
WB	1:1000-1:5000
IF	1:50

Data



Western Blot with Thrombomodulin Monoclonal Antibody at dilution of 1:5000. Lane 1: THP-1, Lane 2: Human placenta

Observed-MW:90 kDa
Calculated-MW:60 kDa



Immunofluorescent analysis of (100% Ice-cold methanol) fixed A431 cells using anti-Thrombomodulin Monoclonal Antibody at dilution of 1:50.

Preparation & Storage

Storage	Store at -20°C Valid for 12 months. Avoid freeze / thaw cycles.
Shipping	Ice bag

Background

Thrombomodulin is a specific endothelial cell receptor that forms a 1:1 stoichiometric complex with thrombin. This complex is responsible for the conversion of protein C to the activated protein C (protein Ca). Once evolved, protein Ca scissions the activated cofactors of the coagulation mechanism, factor Va and factor VIIIa, and thereby reduces the amount of thrombin generated.

For Research Use Only