

Recombinant Phospho-IGF1R (Tyr1131)/Insulin Receptor β (Tyr1146) Monoclonal Antibody

catalog number: AN300051L

Note: Centrifuge before opening to ensure complete recovery of vial contents.

Description

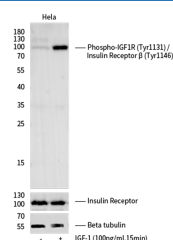
Reactivity	Human
Immunogen	A synthetic phosphopeptide corresponding to residues around Tyr1131 of the Human Phospho-IGF1R or Tyr1146 of the Human Insulin Receptor β
Host	Rabbit
Isotype	IgG
Clone	2C7
Purification	Protein A
Buffer	10 mM sodium HEPES, 150 mM NaCl, 100 μ g/mL protein protectant, 50% glycerol, pH 7.5

Applications

Recommended Dilution

WB	1:1000-1:10000
-----------	----------------

Data



Western blot analysis of extracts from serum-starved HeLa, untreated (-) or treated with IGF-1 100ng/mL 15min (+), using Phospho-

IGF1R (Tyr1131) / Insulin Receptor β (Tyr1146) Monoclonal Antibody at 1:500 dilution (upper) or Anti-Insulin Receptor Antibody, Rabbit PAb (middle) at 1:1000 dilution or Beta-Tubulin Loading Control Antibody, Mouse Mab at 1:10000 dilution.

Observed-MW:100 kDa

Calculated-MW:154 kDa

Preparation & Storage

Storage	This antibody can be stored at 2°C-8°C for one month without detectable loss of activity. Antibody products are stable for twelve months from date of receipt when stored at -20°C to -80°C. Preservative-Free. Avoid repeated freeze-thaw cycles.
Shipping	Ice bag

Background

For Research Use Only

This receptor binds insulin-like growth factor with a high affinity. It has tyrosine kinase activity. The insulin-like growth factor I receptor plays a critical role in transformation events. Cleavage of the precursor generates alpha and beta subunits. It is highly overexpressed in most malignant tissues where it functions as an anti-apoptotic agent by enhancing cell survival. Alternatively spliced transcript variants encoding distinct isoforms have been found for this gene.