

## Elab Fluor® Violet 450 Anti-Human HLA-A2,B7 Antibody[BB7.6]

Catalog Number: AN00634Q

Note: Centrifuge before opening to ensure complete recovery of vial contents.

### Description

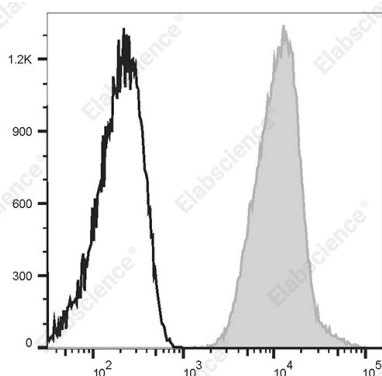
<b>Reactivity</b>	Human
<b>Host</b>	Mouse
<b>Isotype</b>	Mouse IgG1
<b>Clone No.</b>	BB7.6
<b>Isotype Control</b>	Elab Fluor® Violet 450 Mouse IgG1, κ Isotype Control[MOPC-21] [Product E-AB-F09792Q]
<b>Conjugation</b>	Elab Fluor® Violet 450
<b>Conjugation Information</b>	Elab Fluor® Violet 450 is designed to be excited by the violet laser (405 nm) and detected using an optical filter centered near 450 nm (e.g., a 450/45 nm bandpass filter).
<b>Storage Buffer</b>	Phosphate buffered solution, pH 7.2, containing 0.09% stabilizer.

### Applications

### Recommended usage

<b>FCM</b>	Each lot of this antibody is quality control tested by flow cytometric analysis. <b>The amount of the reagent is suggested to be used 5 μL of antibody per test (million cells in 100 μL staining volume or per 100 μL of whole blood).</b> Please check your vial before the experiment. Since applications vary, the appropriate dilutions must be determined for individual use.
------------	---

### Data



Staining of normal human peripheral blood cells with Elab Fluor® Violet 450 Anti-Human HLA-A2,B7 Antibody[BB7.6] (filled gray histogram) or Elab Fluor® Violet 450 Mouse IgG1, κ Isotype Control (empty black histogram). Cells in the lymphocytes gate were used for analysis.

### Preparation & Storage

<b>Storage</b>	Keep as concentrated solution. This product can be stored at 2-8°C for 24 months. Please protected from prolonged exposure to light and do not freeze.
<b>Shipping</b>	Ice bag

### Antigen Information

<b>Alternate Names</b>	MHC-class I;HLA-B*07;HLA Class I histocompatibility antigen B alpha chain
<b>Uniprot ID</b>	P04439

### For Research Use Only

**Gene ID**

3105

**Background**

HLA-A2 is most common in Northern Asia and North America populations. MHC class I antigens associated with  $\beta$ 2-microglobulin are expressed by all human nucleated cells. MHC class I molecules are involved in presentation of antigens to CD8+ T cells, playing an important role in cell-mediated immune responses and tumor surveillance. HLA-B belongs to the HLA class I heavy chain paralogues. HLA-B7 is a serotype of HLA-A-B and one of the common HLA types. MHC class I heavy chains associate with  $\beta$ 2-microglobulin and are expressed on nearly all nucleated cells. MHC class I molecules are involved in the presentation of antigens to CD8+ T cells and thereby play an important role in cell-mediated immune responses and immune surveillance.