

## Recombinant CD32B Monoclonal Antibody

catalog number: **AN301474L**

**Note:** Centrifuge before opening to ensure complete recovery of vial contents.

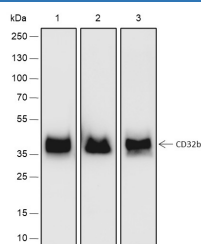
### Description

<b>Reactivity</b>	Human;
<b>Immunogen</b>	Recombinant human CD32B fragment
<b>Host</b>	Rabbit
<b>Isotype</b>	IgG, $\kappa$
<b>Clone</b>	A169
<b>Purification</b>	Protein A purified
<b>Buffer</b>	PBS, 50% glycerol, 0.05% Proclin 300, 0.05% protein protectant.

### Applications Recommended Dilution

<b>WB</b>	1:500-1:2000
<b>IHC</b>	1:200-1:1000
<b>IF</b>	1:50

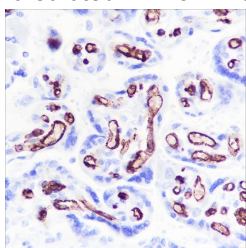
### Data



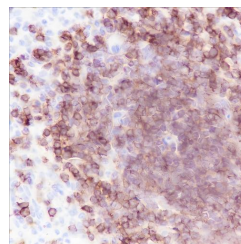
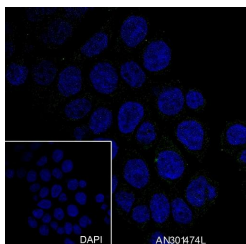
Western Blot with CD32B Monoclonal Antibody at dilution of 1:1000. Lane 1: Daudi, Lane 2: Human prostate cancer, Lane 3: THP-1

**Observed-MW:40-44 kDa**

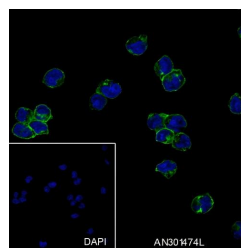
**Calculated-MW:34 kDa**



Immunohistochemistry of paraffin-embedded Human placenta using CD32B Monoclonal Antibody at dilution of 1:1000.



Immunohistochemistry of paraffin-embedded Human spleen using CD32B Monoclonal Antibody at dilution of 1:200.



Immunofluorescent analysis of (4% Paraformaldehyde) fixed Daudi cells using anti-CD32B Monoclonal Antibody at dilution of 1:50.

### For Research Use Only

Toll-free: 1-888-852-8623  
Web: [www.elabscience.com](http://www.elabscience.com)

Tel: 1-832-243-6086  
Email: [techsupport@elabscience.com](mailto:techsupport@elabscience.com)

Fax: 1-832-243-6017

Rev. V1.0

Immunofluorescent analysis of (4% Paraformaldehyde) fixed  
HT-29(Negative cell line) cells using anti-CD32B Monoclonal  
Antibody at dilution of 1:50.

## Preparation & Storage

<b>Storage</b>	Store at -20°C Valid for 12 months. Avoid freeze / thaw cycles.
<b>Shipping</b>	Ice bag

## Background

CD32b is receptor for the Fc region of complexed or aggregated immunoglobulins gamma. Involved in a variety of effector and regulatory functions such as phagocytosis of immune complexes and modulation of antibody production by B-cells. Binding to this receptor results in down-modulation of previous state of cell activation triggered via antigen receptors on B-cells (BCR), T-cells (TCR) or via another Fc receptor.

## For Research Use Only

Toll-free: 1-888-852-8623  
Web: [www.elabscience.com](http://www.elabscience.com)

Tel: 1-832-243-6086  
Email: [techsupport@elabscience.com](mailto:techsupport@elabscience.com)

Fax: 1-832-243-6017

Rev. V1.0