

Recombinant N Cadherin Monoclonal Antibody

catalog number: **AN300983L**

Note: Centrifuge before opening to ensure complete recovery of vial contents.

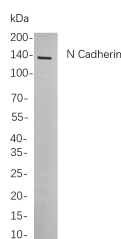
Description

Reactivity	Human;Mouse;Rat
Immunogen	Recombinant Human N Cadherin protein
Host	Rabbit
Isotype	IgG, κ
Clone	B734
Purification	Protein A
Buffer	PBS, 50% glycerol, 0.05% Proclin 300, 0.05% protein protectant.

Applications Recommended Dilution

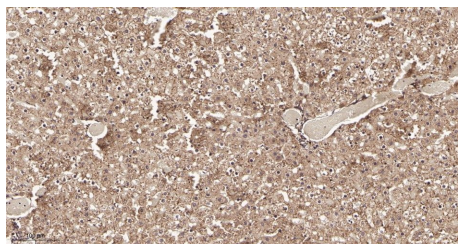
IHC	1:500-1:2000
WB	1:1000-1:5000

Data

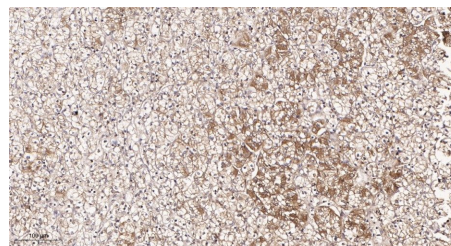


Western Blot with Recombinant N Cadherin Monoclonal Antibody at dilution of 1:1000 dilution. Lane A: Mouse brain cells.

Observed-MW:130 kDa
Calculated-MW:125 kDa



Immunohistochemistry of paraffin-embedded rat liver tissue using Recombinant N Cadherin Monoclonal Antibody at dilution of 1:200.



Immunohistochemistry of paraffin-embedded human kidney carcinoma tissue using Recombinant N Cadherin Monoclonal Antibody at dilution of 1:200.

Preparation & Storage

Storage	Store at -20°C Valid for 12 months. Avoid freeze / thaw cycles.
Shipping	Ice bag

Background

This gene encodes a classical cadherin and member of the cadherin superfamily. Alternative splicing results in multiple transcript variants, at least one of which encodes a preproprotein is proteolytically processed to generate a calcium-dependent cell adhesion molecule and glycoprotein. This protein plays a role in the establishment of left-right asymmetry, development of the nervous system and the formation of cartilage and bone.

For Research Use Only