

## Recombinant LSM1 Monoclonal Antibody

catalog number: **AN300447P**

**Note:** Centrifuge before opening to ensure complete recovery of vial contents.

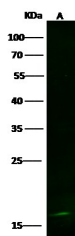
### Description

<b>Reactivity</b>	Human
<b>Immunogen</b>	Recombinant Human LSM1 Protein
<b>Host</b>	Rabbit
<b>Isotype</b>	IgG
<b>Clone</b>	2D10
<b>Purification</b>	Protein A
<b>Buffer</b>	0.2 µm filtered solution in PBS

### Applications Recommended Dilution

<b>WB</b>	1:500-1:1000
-----------	--------------

### Data



Western Blot with LSM1 Monoclonal Antibody at dilution of 1:500 dilution. Lane A: K562 Whole Cell Lysate, Lysates/proteins at 30 µg per lane.

**Observed-MW:17 kDa**

**Calculated-MW:15 kDa**

### Preparation & Storage

<b>Storage</b>	This antibody can be stored at 2°C-8°C for one month without detectable loss of activity. Antibody products are stable for twelve months from date of receipt when stored at -20°C to -80°C. Preservative-Free. Avoid repeated freeze-thaw cycles.
<b>Shipping</b>	Ice bag

### Background

This gene encodes a member of the LSm family of RNA-binding proteins. LSm proteins form stable heteromers that bind specifically to the 3'-terminal oligo(U) tract of U6 snRNA and may play a role in pre-mRNA splicing by mediating U4/U6 snRNP formation. Increased expression of this gene may play a role in cellular transformation and the progression of several malignancies including lung cancer, mesothelioma and breast cancer. Alternatively spliced transcript variants have been observed for this gene, and a pseudogene of this gene is located on the short arm of chromosome 9.

### For Research Use Only