

Recombinant Phospho-p70 S6 Kinase 1 (Thr389) Monoclonal Antibody

catalog number: **AN300363P**

Note: Centrifuge before opening to ensure complete recovery of vial contents.

Description

Reactivity	Human
Immunogen	A synthetic phosphopeptide corresponding to residues around Thr389 of human p70 S6 kinase 1.
Host	Rabbit
Isotype	IgG
Clone	12G12
Purification	Protein A
Buffer	0.2 μ m filtered solution in PBS

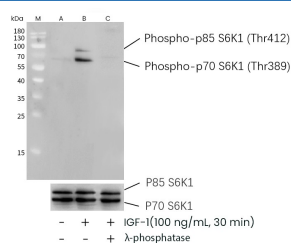
Applications

Recommended Dilution

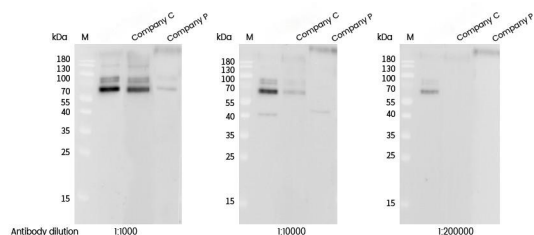
WB

1:1000-1:200000

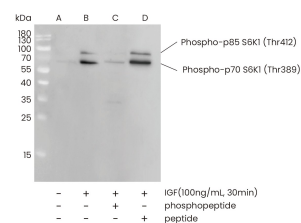
Data



Observed-MW:60 kDa,80 kDa
Calculated-MW:59 kDa



Observed-MW:60 kDa,80 kDa
Calculated-MW:59 kDa



Observed-MW:60 kDa,80 kDa
Calculated-MW:59 kDa

Preparation & Storage

For Research Use Only

Toll-free: 1-888-852-8623
Web: www.elabscience.com

Tel: 1-832-243-6086
Email: techsupport@elabscience.com

Fax: 1-832-243-6017

Rev. V1.0

Storage

This antibody can be stored at 2°C-8°C for one month without detectable loss of activity. Antibody products are stable for twelve months from date of receipt when stored at -20°C to -80°C. Preservative-Free. Avoid repeated freeze-thaw cycles.

Shipping

Ice bag

Background

This gene encodes a member of the ribosomal S6 kinase family of serine/threonine kinases. The encoded protein responds to mTOR (mammalian target of rapamycin) signaling to promote protein synthesis, cell growth, and cell proliferation. Activity of this gene has been associated with human cancer. Alternatively spliced transcript variants have been observed. The use of alternative translation start sites results in isoforms with longer or shorter N-termini which may differ in their subcellular localizations. There are two pseudogenes for this gene on chromosome 17.

For Research Use Only

Toll-free: 1-888-852-8623
Web: www.elabscience.com

Tel: 1-832-243-6086
Email: techsupport@elabscience.com

Fax: 1-832-243-6017

Rev. V1.0