

Recombinant Mouse CXCL3 protein(His Tag)

Catalog Number: PKSM041508

Note: Centrifuge before opening to ensure complete recovery of vial contents.

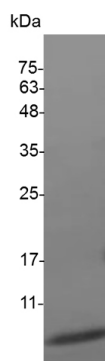
Description

| | |
|----------------------|--|
| Species | Mouse |
| Source | E.coli-derived Mouse CXCL3 protein Ala 28-Ser 100, with an N-terminal His |
| Calculated MW | 8.7 kDa |
| Observed MW | 11 kDa |
| Accession | Q6W5C0 |
| Bio-activity | Measure by its ability to chemoattract BaF3 cells transfected with human CXCR2. The ED ₅₀ for this effect is <80 ng/mL. |

Properties

| | |
|-----------------------|---|
| Purity | > 98 % as determined by reducing SDS-PAGE. |
| Endotoxin | < 0.1 EU per µg of the protein as determined by the LAL method. |
| Storage | Generally, lyophilized proteins are stable for up to 12 months when stored at -20 to -80°C. Reconstituted protein solution can be stored at 4-8°C for 2-7 days. Aliquots of reconstituted samples are stable at < -20°C for 3 months. |
| Shipping | This product is provided as lyophilized powder which is shipped with ice packs. |
| Formulation | Lyophilized from sterile PBS, pH 7.4. Normally 5% - 8% trehalose, mannitol and 0.01% Tween 80 are added as protectants before lyophilization. Please refer to the specific buffer information in the printed manual. |
| Reconstitution | Please refer to the printed manual for detailed information. |

Data



> 98 % as determined by reducing SDS-PAGE.

Background

C-X-C Motif Chemokine 3 (CXCL3) is a secreted protein that belongs to the intercrine alpha (chemokine CXC) family. CXCL3 controls the migration and adhesion of monocytes and mediates its effect on its target cell by interacting with a cell surface chemokine receptor called CXCR2. In addition, CXCL3 is thought to play a role in inflammation and exert its effects on endothelial cells in an autocrine fashion.

For Research Use Only

Toll-free: 1-888-852-8623
Web: www.elabscience.com

Tel: 1-832-243-6086
Email: techsupport@elabscience.com

Fax: 1-832-243-6017