

Elab Fluor® 700 Anti-Human CD268 Antibody[11C1]

Catalog Number: AN00316M1

Note: Centrifuge before opening to ensure complete recovery of vial contents.

Description

Reactivity	Human
Host	Mouse
Isotype	Mouse IgG1, κ
Clone No.	11C1
Isotype Control	Elab Fluor® 700 Mouse IgG1, κ Isotype Control[MOPC-21] [Product E-AB-F09792M1]
Conjugation	Elab Fluor® 700
Conjugation Information	Elab Fluor® 700 is designed to be excited by the Red laser (627-640 nm) and detected using an optical filter centered near 719 nm (e.g., a 725/40 nm bandpass filter).
Storage Buffer	Phosphate buffered solution, pH 7.2, containing 0.09% sodium azide and 1% BSA.

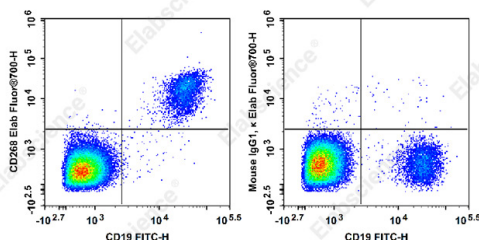
Applications

Recommended usage

FCM

Each lot of this antibody is quality control tested by flow cytometric analysis. **The amount of the reagent is suggested to be used 5 μL of antibody per test (million cells in 100 μL staining volume or per 100 μL of whole blood).** Please check your vial before the experiment. Since applications vary, the appropriate dilutions must be determined for individual use.

Data



Staining of normal human peripheral blood cells with FITC

Anti-Human CD19 Antibody[HI19a] and Elab Fluor® 700 Anti-Human CD268 Antibody[11C1](left) or Elab Fluor® 700 Mouse IgG1, κ Isotype Control(right). Cells in the lymphocytes gate were used for analysis.

Preparation & Storage

Storage	Keep as concentrated solution. This product can be stored at 2-8°C for 12 months. Please protected from prolonged exposure to light and do not freeze.
Shipping	Ice bag

Antigen Information

Alternate Names	LPS receptor
Uniprot ID	Q96RJ3
Gene ID	115650

For Research Use Only

Background

B cell-activating factor receptor (BAFF-R) is a 19 kD type III membrane protein. It belongs to TNFR superfamily, also known as TNFRSF member 13C (TNFRSF13C), BAFF receptor 3 (BR3), or CD268. BAFF-R is expressed on mature B cells, B cell lymphoma, and T cell subset. BAFF-R is the major receptor for BAFF/BLys (or TALL-1, THANK) which binds to TACI and BCMA as well. The interaction of BAFF with BAFF-R promotes NF- κ B activation and plays predominant roles in B-cell maturation and survival as well as costimulates T cell activation and proliferation. TRAF3 is a BAFF-R intracellularly associated protein, which negatively regulates BAFF-R-mediated NF- κ B activation.