

## Recombinant Mouse OX40L protein(His Tag)

**Catalog Number: PKSM041488**

**Note:** Centrifuge before opening to ensure complete recovery of vial contents.

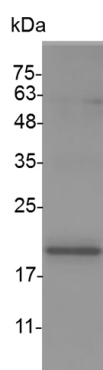
### Description

<b>Species</b>	Mouse
<b>Source</b>	E.coli-derived Mouse OX40L protein Gln 49-Leu 198, with an N-terminal His
<b>Calculated MW</b>	17.7 kDa
<b>Observed MW</b>	17-25 kDa
<b>Accession</b>	P43488
<b>Bio-activity</b>	Measure by its ability to induce IL-2 secretion in mouse T cells in the presence of the anti-CD3 antibody. The ED <sub>50</sub> for this effect is <25 ng/mL.

### Properties

<b>Purity</b>	> 95 % as determined by reducing SDS-PAGE.
<b>Endotoxin</b>	< 0.1 EU per µg of the protein as determined by the LAL method.
<b>Storage</b>	Generally, lyophilized proteins are stable for up to 12 months when stored at -20 to -80 °C. Reconstituted protein solution can be stored at 4-8°C for 2-7 days. Aliquots of reconstituted samples are stable at < -20°C for 3 months.
<b>Shipping</b>	This product is provided as lyophilized powder which is shipped with ice packs.
<b>Formulation</b>	Lyophilized from sterile PBS, pH 7.4. Normally 5% - 8% trehalose, mannitol and 0.01% Tween 80 are added as protectants before lyophilization. Please refer to the specific buffer information in the printed manual.
<b>Reconstitution</b>	Please refer to the printed manual for detailed information.

### Data



> 95 % as determined by reducing SDS-PAGE.

### Background

OX40 ligand (OX40L), also called CD252, is a single-pass type II membrane protein of the TNF/TNF receptor superfamily. OX40L is expressed by DCs, macrophages and B cells and signals via its cognate receptor OX40 which is mainly expressed on APCs. OX40L/OX40 interactions are important in T-cell activation and survival and for the generation of memory T cells from activated effector T cells. OX40L–OX40 co-stimulation leads to activation of TNF receptor associated factor (TRAF) 2, 3 and 5. This pathway has been shown to prolong the survival of effector CD4<sup>+</sup>Th cells as well as contributes to generation of memory T cells.

### For Research Use Only